



Eastington Community News

A free, locally produced
publication celebrating
community in
Eastington.

COVER BY:
JACK BOWN

ISSUE 208
Feb - Mar 25



Business | Community | Environment | Events | History
News | Youth

Eastington Village Hall



For your function or group meeting

Central village location
£8 per hour
Kitchen, tables & chairs
Stage, toilets etc

Check availability and
book on-line:

evh.eastington.website

Eastington Community Centre

Owen Harris Memorial Ground



email: enquiries@ohmg.org.uk
web: www.ohmg.org.uk

The main hall can host 80 people seated
or 150 standing.
Small meeting room available.
Fully equipped kitchen and bar available.

Eastington Community Centre,
OHMG Building, Snakey Lane,
Eastington, GL103AQ

Editor's Note

Welcome to issue 208.

Here is your bimonthly dose of Eastington news. It's taken a few weeks for the village to wake up since Christmas and New Years - and goodness, didn't January feel like a very slow month? But here we are, in the second month of 2025. For anyone interested, we are on the hunt for new blood! Do you have an interest in writing? Do you know someone looking for journalism experience? Volunteer application forms can be accessed via our email address on the right.

Until next time,
The ECN Team x

p.s. Some useful info:

The deadline for the next issue is: **17/1/25**, to be delivered around: **1/4/25**.
Space is limited - we may omit, edit or shorten articles.

The views expressed in ECN are not necessarily those of the ECN team.
If you would like to see this magazine in colour, visit the Eastington Hub at <https://eastington.website>.

- articles@eastington.website
- ecn.eastington.website
- Eastington Community News

CONTRIBUTERS:

Jack Bown, Tom Long, Marianne Simpson, Richard Maisey, Irena Litton, Jenny Winfield, Lynne Birch, Anna Rowland, Louise Partridge, Simon Chapman, Sue Withers, Barbara Lang, Mike Naylor, Gill Glover, Megan Timbrell and Stephen Mills.

TEAM:

DAVID GRANGER
Treasurer

GILL GLOVER
Distribution

JAN LOW
Support

LUCINDA BROCKLEHURST
Artwork/Design/Editorial

SUE HALAS
Admin/Advertising

PRINTER:



DELIVERERS:

Eight hundred magazines later... thank you to the twenty-seven lovely people who have delivered this issue.

Contents

NEWS.....	07
YOUTH.....	12
COMMUNITY.....	16
HISTORY.....	26
ENVIRONMENT.....	30
BUSINESS.....	33



King's Stanley Village Hall

Large, modern village hall
with a capacity of 200 people.
Excellent, up-to-date facilities,
stage and bar.

The perfect setting for your
wedding, birthday or celebration.

Call Pam Culver on
01453 821 153

ksvhbookings@gmail.com

www.kingsstanleyvillagehall.org.uk



Great Oldbury Community Centre

Bookings can be made through our online
HallMaster Booking System:
<https://www.greatoldbury-pc.gov.uk/community-and-sports-facilities>

For further information, email:
booking@greatoldbury-pc.gov.uk

Community Centre
Daniels Way, Great Oldbury
GL10 3XR

COVER BY: Jack Bown

Jack and his partner, Nikki, have lived in the village for just over twenty years. Nikki was the local Hermes Courier for forty years and Jack assisted for twenty of them.

Jack has owned a Mavic Air 2 drone for four years and flies it registered and licensed. He has over 400 pictures and videos of Eastington. He finds it fascinating to see where we live from above - this is exemplified by the fact that he has over 19,000 pictures of aerial views on his phone!

TO SUBMIT YOUR OWN
WORK FOR THE FRONT
COVER OF THE NEXT ISSUE,
PLEASE EMAIL: ARTICLES@EASTINGTON.WEBSITE.



Why sponsor Eastington Community News?



As well as funding the £800+ it costs to produce each issue, there are a number of benefits for a business or organisation to sponsor ECN.

Community

By affiliating with ECN, your business or organisation will be able to demonstrate commitment to, and support for, the local community, fostering goodwill and building strong relationships with the 2,000+ residents of Eastington.

Visibility & Trust

Regular presence in this community-driven publication increases brand awareness and credibility among local readers, keeping your business top-of-mind.

Local Journalism

A sponsorship will help sustain local media, ensuring the continuation of ECN's objective to share important local news, stories, and events, for all. This magazine is a lifeline for many who haven't got any access to the internet and/or social media.

Who are we looking for?

A local business that strives for the same community-driven ethos as above.

A **local** business is important to us because:

- Local spending boosts local economy and reduces business carbon footprint. Local needs can be met by local services.

- In this current living-cost crisis, spending money has never been more stressful.

Buying local helps local people to pay their bills and feed their families; be it the local butcher, hairdresser, farm shop... all of which are run by real people who care about the quality of their service and the residents they are selling to... as opposed to the remote, tax-avoiding, large global corporations.

“If our local businesses thrive, so do our communities. We are all in this together.” *

For more information, please email: advertising@eastington.website



.....
Following ECN's forebearer 'Eastington Parish Magazine' which existed from the 1880s through to the early years of the 20th century, Eastington Community News was born in 1989 with the aim to keep the village updated with local planning. Over 200 issues have been printed since, containing decades' worth of news, stories, council activity, events, history and community. Sponsorship would ensure that Eastington Community News can continue to report, connect and support the village and its residents for the foreseeable.

*<https://keep-it-local.co.uk/>

Eastington Community News 2025 Survey



Have your say: help us be better for you

The following questions are optional, but all answers received have the potential to make big changes. If you need any assistance completing this survey, please email articles@eastington.website. This page can be cut out and posted with your answers into our **ECN postbox at the Co-op tills**, anonymously if preferred. Responses will be accepted until *17th March 2025*.

Q1. What is your favourite thing about the magazine?

Q2. What is your least favourite thing about the magazine?

Q3. Please suggest any additional topics or features of Eastington you think the magazine should cover.

...continues on the next page





Eastington Community Land Trust

First Steps to Building 31 Affordable Homes
BY TOM LONG



It's only a bit of hedge trimming and a big sign - but it's a start.

This is ECLT's second development; affordable homes for Eastington people. Like Fullers Close, applicants for Homeground will be screened by Local Connection:

- Resident in the Parish for three of the last five years
- Related to someone currently resident
- Working in the Parish for six of the last twelve months (lower priority to the above)

Our partner Housing Association, Two Rivers, already has eleven homes in Swallowcroft. Delivery is expected in **Spring 2026**. The rented properties include a couple of 1-bed bungalows for "downsizing" and of the 1-bed flats, four are level-access ground floor and four are first-floor.

There will be six 2-bed houses and five 3-bed homes for rent as well.

For rented homes, please apply through "Homeseeker Plus" if you are not already registered. A Drop-in event will be held in the Village Hall later this year to help explain the Shared Ownership process or any other queries.



Ten of the thirty-one homes are planned for affordable Shared Ownership, in response to the 2019 Housing Needs Survey (eight of them 2-bed, two being 3-bed).

To reflect the main building colours in the village, there is a mix of traditional red brick and Cotswold creamy-grey (like opposite sides of Alkerton Road).

You can also attend the ECLT Annual General Meeting from 7:00pm on 6th February at Eastington Village Hall.

.....
EASTINGTON CLT WAS SET UP BY CONCERNED RESIDENTS OF EASTINGTON IN RESPONSE TO THE LACK OF AFFORDABLE LOCAL HOUSING, BOTH FOR THE YOUNGER GENERATIONS AND FOR EXTENDED FAMILY SUPPORT FOR THE OLDER GENERATIONS. ECLT'S PRIMARY AIM IS TO SERVE LOCAL HOUSING NEEDS WHILST HELPING TO LIMIT FURTHER DEVELOPMENT IN THE VILLAGE VIA THE PARISH COUNCIL, THE NEIGHBOURHOOD PLAN AND LOCAL PLAN POLICIES.

ECLT.EASTINGTON.WEBSITE
TOM@EASTINGTONCLT.UK | 07974 369680

...ECN survey continued:



Q4. Please vote on the scale below.
(0 = terrible, 10 = excellent)

	Terrible					Excellent					
	0	1	2	3	4	5	6	7	8	9	10
Content	0	0	0	0	0	0	0	0	0	0	0
Front Cover	0	0	0	0	0	0	0	0	0	0	0
Articles	0	0	0	0	0	0	0	0	0	0	0
Layout and Design	0	0	0	0	0	0	0	0	0	0	0
Photography and Art ...	0	0	0	0	0	0	0	0	0	0	0
Writing	0	0	0	0	0	0	0	0	0	0	0
Frequency	0	0	0	0	0	0	0	0	0	0	0

Q5. Is there anything else you think we could do better?

Q6. Final comments?

Thank you for your feedback. If you would like to share your contact details, please add these below and we will be in contact.



This survey can also be answered online here:



Eastington Parish Council Newsletter

Parish Matters

BY MARIANNE SIMPSON



The Parish Council would like to wish you all a Happy New Year ahead.

The Parish Council started the year by producing our draft budget for the next financial year which runs from 1st April 2025 until 31st March 2026. At the January meeting, the budget was reviewed and was used to help with setting the precept. The Parish Council agreed to set the precept for 2025-26 at £5,000.

The precept is the Parish Council part of your council tax bill. Part of the precept calculation is the 'Band D equivalent'. Band D is the middle band of council tax and is used to represent the amount of council tax paid on an 'average' property in the parish.

The estimated number of Band D equivalent properties in the tax base is notified to the Parish Council by Stroud District Council prior to the precept setting exercise. The required precept is divided by the number of houses in the tax base to get the Band D equivalent. Once a precept has been approved by the Parish Council, Stroud District Council are informed, who then add it to the resident's council tax bills. Stroud District Council pay the precept to the Parish Council in two instalments (April and September).

Unlike district and county councils, parishes receive no funding from central government, relying solely on what residents pay via their precept charge, plus any other income they generate from services they provide or from grants awarded. When calculating the precept, the Parish Council took into consideration:

- Current year's spending level to Q3 (31 Dec 2024) and the projected year end spending. On-going services it is responsible for e.g. recreation facilities, lighting, burial ground, insurance, grounds maintenance, and costs of running the Parish Council.
- Costs of any additional spending plans and projects.
- Anticipated income – e.g. allotment and burial fees, grants awarded, etc
- The current tax base and Band D calculation. The Eastington tax base 2025-26 has increased by 2.04%.
- Provision for contingencies and reserves
- Current rate of inflation and cost of living
- Last year's precept

Setting the precept at £5,000 for 2025-26 is reducing the precept by 94.95% for a Band D 'average' property. In monetary terms this is a cost of £7.94/year (or 15p/week) for the Parish Council portion of a council tax bill for a Band D 'average' property in Eastington.

A number of projects are being planned for the coming year, including:

- Bath Road pavement widening (currently awaiting BT Openreach to lower the BT cabinet, which was exposed during the scoping works).
- Spring Hill pavement widening.
- Snakey Park play area refurbishment. The play area and skate ramp must be monitored and maintained in line with Health and Safety Legislation. The play park is a much-valued popular facility and gets a lot of use. The surfacing needs replacing and some of the apparatus requires repair or replacement. Input from users and groups of the play area was gathered to inform the refurbishment.
- Neighbourhood Development Plan revision.

The draft budget 2025-26 is published on the Parish Council website. The budget will be tweaked over the next few months, and a final budget 2025-26 will be published at the year-end on 31st March 2025. **If anyone in the parish has anything they would like to be considered in the budget, please let the Parish Council know.**

The last newsletter article detailed the location of defibrillators in the village. I can update that the Nastend defibrillator is now in place, and a further defibrillator has been approved for Middle Street, close to the junction of Bath Road. This should be installed in the next month; the exact location and installation details are to be confirmed. This will then provide cover for all those in that end of the village, and those living along Bath Road.

Anyone can use a defibrillator. You do not need training as the defibrillators give clear step-by-step voice instructions. While you do not need to be trained to use a defibrillator, having training can ensure you are familiar with the defibrillator and ready to act quickly in an emergency.

The Parish Council will arrange defibrillator training if there is any interest for it. I have mentioned this before but had no response. **Please do contact the Parish Council if you are interested in taking advantage of this opportunity for defibrillator training.**

Finally, please note that the Parish Council landline number is being discontinued from the end of January 2025. The Parish Council does not have a council office or office phone and the landline number for the Parish Council is a virtual landline number that forwards calls to a mobile phone. It is costly, was rarely used, and often there was a delay in the phone message being received. Therefore, in future, please always use the mobile number to contact the Parish Council.

.....
[HTTPS://EASTINGTON-PC/GOV.UK](https://eastington-pc.gov.uk)

Eastington Parish Council clerk: **clerk@eastington-pc.gov.uk**
Eastington Parish Council chair: **muriel.bullock@eastington-pc.gov.uk**
Tel: **07747 634217**

PLEASE NOTE, THE CLERK WORKS PART TIME ON MONDAYS, THURSDAYS AND FRIDAYS.

UPCOMING MEETINGS

- 7:00PM, 13th February 2025.....**Parish Council Meeting** at The Village Hall
7:00PM, 13th March 2025.....**Parish Council Meeting** at The Village Hall
7:00PM, 10th April 2025.....**Parish Council Meeting** at The Village Hall

Stroud District Council Newsletter

A Brave New World

BY CLLR RICHARD MAISEY



Well, we've had some cold and some snow and some ice - let us hope the weather will not be too damp and miserable in February and March!

Talking about change, as some of you may be aware, the government published a white paper on 16th December outlining proposals to devolve power from Westminster to new Strategic Combined Authorities. As a first step towards such devolution in Gloucestershire, the combined powers of the District and County Councils is to be vested in one new organisation to be known as a Unitary Authority.

This means that all district councils, including Stroud District Council, will cease to exist in the not-too-distant future (probably in three or four years). Gloucester County Council will also cease to exist and be replaced by one or more Unitary Authorities. It is up to the Minister of State to decide the administrative area that each new Unitary Authority will cover. This means that the area may be defined by the present County boundaries, or the Minister may decide that a different area is more appropriate.

There is a fast-track method of forming a new Unitary Authority, where most existing authorities (within the relevant area) agree as to the extent of the new Unitary Authority. Gloucester County Council wishes to fast track, but most of the District Councils do not. If this area was fast tracked the County Council elections in May would be cancelled. Such a fast track seems unlikely given the difference of opinion outlined above. A decision on this is likely to be made soon! Anyway, once a Unitary Authority is formed there is a process whereby Unitary Authorities can join to form a larger Strategic Combined Authority (SCA), which is entitled to request devolution of powers from Westminster. The Government's intention is that each SCA should have a mayor and a committee heading it, to make strategic decisions for the benefit of its constituents. The Government believes this re-organisation will stimulate the growth of the economy, and cites existing SCA's as proof of this.

I would also correct an error in my last report when I suggested the access to the proposed development of 130 houses adjoining Nupend was through Nupend. Please note the main access to the site, is onto Grove Lane. I do not consider this access to be appropriate and I have written to the County Council Highways to that effect. I have also written to Highways asking them to outline what parking restrictions they will place in Grove Lane to avoid gridlock when the Football Stadium comes into use.

Happy days - I hope my next column will be a little more entertaining!

Stroud District Council: customer.services@stroud.gov.uk
Cllr Richard Maisey: cllr.richard.maisey@stroud.gov.uk

Great Oldbury Parish Council News

Discover the Buzz at Great Oldbury Community Centre!

BY IRENA LITTON



We're thrilled to announce that the Community Hall in Great Oldbury is now open, and it's brimming with exciting activities for everyone to enjoy!

Whether you're looking to get active, connect with others, or try something new, we've got something for you.

Join the energy of **Zumba** and **Zumba Gold**, unwind with **Chi Fit Qigong**, or dive into the rhythm with **Baby Ballet** and **Baby Sensory Classes**. Keep fit with **Sportily Fitness** and relax afterward at their free **Community Café**. Try your hand at **Badminton**, join the dynamic **Five Valleys Valkyries**, or power up with **DeeDee Fitness**. And that's just the start - more exciting group bookings are on the way!

Check out the full schedule and booking information on our website. Don't miss out - your new favourite activity might be waiting for you at the Great Oldbury Community Centre!

<https://www.greatoldbury-pc.gov.uk/community-and-sports-facilities>

Great Oldbury Parish Council clerk: clerk@greatoldbury-pc.gov.uk
Tel: **01453 619624**



Eastington Playgroup Newsletter

BY JENNY WINFIELD

Playgroup was full of excitement and stories of cheeky elves before the Christmas holidays.

We enjoyed lots of baking and creating: Christmas tree brownies and Christmas pudding biscuits. We made presents for our parents and Christmas cards and baubles for them to treasure.

We spent time outside, enjoying frosty walks and looking at our footprints in the crunchy grass.

We were lucky enough to have Robot Reg come and visit us to teach us phonics based around Diwali and another week around Christmas. The children loved their sessions and were so engaged in the fun activities Aneesa provides.

We engaged in lots of activities to develop our fine motor skills; using tweezers to place the Christmas lights (pom poms) on the wire and threading pipe cleaners into colanders.

We provided opportunities to develop our fine motor skills to continue to develop our hand strength for writing.

We ended the term with our Christmas show 'It's a Cracker' which we performed to parents and grandparents.

.....
EASTINGTON PLAYGROUP HAS BEEN PROVIDING CARE AND EDUCATION FOR LOCAL FAMILIES SINCE 1998. THE PLAYGROUP IS OPEN ON MONDAYS TO THURSDAYS FOR CHILDREN AGED TWO AND A HALF TO FOUR YEARS.



[HTTP://WWW.EASTINGTONPLAYGROUP.CO.UK](http://www.eastingtonplaygroup.co.uk)
[EASTINGTONPLAYGROUP@HOTMAIL.COM](mailto:EastingtonPlaygroup@hotmail.com)
MOBILE: 07977 342742

Eastington Primary School Newsletter

BY LYNNE BIRCH

2025 is now well under way. Class 3 have been thinking about New Year resolutions linked to our school values.

Through our regular assemblies and PSHE lessons, we have been talking about aiming high together to be:

- Kind: show respect and care
- Co-operative: work well together
- Resilient: keep trying
- Responsible: reflect and learn
- Ambitious: challenge yourself

Getting on with everybody in our school is highly valued and we have kindness at the heart of everything we do. We endeavour to look after ourselves, each other and the wider world. We also want everyone to be the best they can be.

Here are some of our resolutions associated with **being kind**:

"Listening to my friends and playing with them, also cheering them up." *Clemmie and Behati.*

"Being kind to my friends when they need help in the playground." *Jaxson and Arlo.*

Being co-operative:

"Working with my team to improve my goalkeeping skills." *Leo and Conor.*

"Work hard in my group to get better at my times tables." *Sienna and Freya.*



Being ambitious:

"To improve my dribbling, shooting and passing the ball with football." *Oscar H and Patrick.*

"To improve my sentences so my stories are really good." *Eva, Aleiyah and Keira.*

Being responsible:

"To improve my joining to make my handwriting neater and on the lines." *Holly and Yasmin.*

"To get even better at fractions and mental maths." *Charlie, Ella and Oscar E.*

And, **being resilient:**

"To improve my reading and writing even when it gets tricky." *Georgia and Maisy.*

"To tackle better at rugby even if it takes a long time." *Jonty, Jesse, Tommy and Finley.*

In the coming weeks and months, we will all look forward to see how everyone is getting on with their new year resolutions.

In Class 3, we want to support each other to achieve them and make ourselves proud.

.....
EASTINGTON PRIMARY IS A COMMUNITY SCHOOL LOCATED ON MILLEND LANE IN CHURCHEND.

[HTTP://WWW.EASTINGTONPRIMARY.CO.UK](http://www.eastingtonprimary.co.uk)
TELEPHONE: 01453 822922

William Morris School Newsletter

William Morris School Eco-Warriors Help Cut Paper Usage by 26%!

BY ANNA ROWLAND

Young environmentalists from William Morris School are leading by example when it comes to tackling wasteful paper consumption!



Inspired by their own reflections on paper usage throughout Novalis Trust - the local charity which runs WMS - pupils recently invited staff to embrace new, eco-friendly habits by signing up to a paper pledge challenge.

Charlie and Marcus, members of the WMS student council, were at the forefront of the initiative. The pair gave a thought-provoking presentation to the Trust's senior management in which they made suggestions for reducing paper usage and encouraged staff to promise to try and cut down on paper waste.

Marcus explained: "After hearing about how much paper was being used, we were keen to address the issue and bring about change throughout the organisation. We decided to hold an assembly on the topic to explore what could be done."

The assembly sparked some thoughtful and creative solutions. Vine Class suggested switching to the environmentally friendly search engine Ecosia, while Lark Class proposed using writing tablets for doodling instead of paper.

The impact of the children's efforts is already being felt. Since launching the challenge, Novalis Trust has reduced its paper usage by nearly 26%.

"Everyone was really pleased that so many members of staff agreed to sign up for the paper pledge and that our initiative has already made such a big impact," said Charlie. "But we want everyone to keep up the good work. We'll be following up on the Trust's paper usage regularly to see if there's been further progress!"

With their determination and innovative ideas, the WMS pupils are setting an inspiring example for the community - and making a tangible difference for the environment.

.....
WILLIAM MORRIS SCHOOL IS AN INDEPENDENT SPECIAL SCHOOL BASED IN EASTINGTON. THE SCHOOL SUPPORTS CHILDREN AND YOUNG PEOPLE WITH COMPLEX LEARNING NEEDS AND ASSOCIATED SOCIAL, EMOTIONAL AND BEHAVIOURAL DIFFICULTIES.

info@william-morris.org.uk
WWW.NOVALIS-TRUST.ORG.UK



TwoCan Theatre Newsletter

BY LOUISE PARTRIDGE

TwoCan has been running for over ten years...

...and although originally set up as an inclusive theatre company touring around the county, has evolved into an organisation that, although still has creativity at the heart of all it does, now delivers a much wider range of opportunities.

TwoCan supports Deaf, disabled and neurodiverse professional artists and has a thriving youth academy that delivers youth theatre and skills development sessions, but since September 2023 it is now developing opportunities for personal development as well.



'Journey To Independence' is a bespoke programme which runs two days a week, supporting young people aged 16 and over to creatively and effectively investigate bespoke ways to build and develop life skills.

Young people identify what areas in their lives that they want to explore and develop and what support they may need to achieve this. This year the group will be exploring 'Work and Recreation' and 'Effective

Communication' on Monday mornings and 'Health and Wellbeing' in the afternoons.



On Tuesday mornings, the group will investigate 'Relationships and Identity' and 'Sensory Exploration' in the afternoon. It is an opportunity for young individuals to learn how to complete tasks confidently and independently, whilst interacting with other young people who have the same needs and interests.

If you, or anyone you know, may be interested in any of TwoCan's programmes, please check out more details via our website below or email us. Alternatively, you are welcome to see us in person at the Old Methodist Church Hall on Saturday 29th March for our Open Day starting at 1.30pm.

.....
TWO CAN IS AN INCLUSIVE THEATRE COMPANY BASED IN EASTINGTON. YOU CAN FOLLOW THEM FOR MORE UPDATES ON FACEBOOK: [@TWO CAN INCLUSIVE](https://www.facebook.com/twocan_inclusive) OR ON THEIR WEBSITE: WWW.TWOCANTHEATRE.ORG.UK.

LOUISE@TWOCANTHEATRE.ORG.UK

The Postie's Review

BY SIMON CHAPMAN

Thank you for the cards and the wine and the tips. Thank you for the beers and the port and the chocolate.

Thank you for the chilli jam and the whisky and the Panettone. Thank you for the limoncello and the fudge and the Christmas biscuit tin.

Thank you for the seeds and the plants and the cuttings. Thank you for the flowers and the rhubarb and the sloe gin.

Thank you for the chat and the gossip and the tea. Thank you for the cold drinks in the Summer and the coffee in the cold last week.

Sorry for the pizza, the funeral plans, the care homes. Sorry for the bills, the brown envelopes, the council forms.

Sorry for the Go Outdoors, the Farm Foods, the phone plans. Sorry for the Severn Trent, the Giga Clear, the home loans.

Sorry for the van blocking up your road, for parking in the 'Keep Clear' and for slowing down the traffic while I unload.

Sorry for the letters that get wet in the rain, delivered to a neighbour, or to some other number ten.

Sorry for the photos of a parcel in a porch, a porch in another street, a foreign porch that isn't yours.

I promise to be better this year, or possibly, maybe, next. I'll even try to remember your name. And to match it with your address.

THANK YOU TO LOCAL WRITER (AND POSTIE), SIMON CHAPMAN, FOR SUBMITTING THIS POEM.



Heart of the Village

BY SUE WITHERS

13th November - theme - Autumn

Well, it was a fine cold day & once again we were delighted to welcome new villagers to our pop-in and it wasn't long before the room was full. The theme of Autumn was decorated around the room with lovely tonal colours and Trish brought along the table decorations of cute little mice which were delightful. The top table was graced with fruit cakes, bread pudding, coffee & walnut cake, brownies and rock cakes and soon our guests were tucking in.



What is so nice now is that people feel comfortable enough to bring their own special mugs so they can enjoy their tea/coffee just how they like it. A great time was had by all.

11th December - theme - Christmas

Our kind helpers had all worked extremely hard behind the scenes having meetings to make sure all the plans were in place for a Christmas pop-in. We wanted it to be a lovely Christmasy feel and asked helpers and guests to wear Christmas attire - and boy, they all turned up trumps, with even one coming as our Christmas elf. It was fantastic! Also, each guest was given a handmade box with a handmade tree decoration and chocolate. What made it very special was that the children of Eastington School had written little Christmas messages to go



into each box, so a big thank you to those children and for Liane for organising.

Jo very kindly took on the mantle of organising and assembling the two wonderful hampers for the Christmas raffle and, oh my goodness, weren't they fantastic? Two lucky guests went home with mountains of luxury goodies. We ended the day with Christmas Carols and how wonderful it was to start our Christmas with such a joyous occasion.

By the time you read this report Christmas would have come and gone and the New Year is here but we hope you all had a fabulous time and look forward to seeing friends old and new at our future pop-ins, you will be made very welcome.

Dates For the Diary:

February 19th from 2:00pm - 4:00pm
March 19th from 2:00pm - 4:00pm

HEART OF THE VILLAGE IS A COMMUNITY-DRIVEN POP-IN EVENT THAT OCCURS ONCE A MONTH AT THE VILLAGE HALL. LOOK OUT FOR THE TEAPOT CHALKBOARD SIGN ERECTED ON THE RAILINGS OUTSIDE ON THE DAY.

YOU CAN CONTACT SUE WITHERS ON: 07949 548 539

Since starting in November, 2024, the group have monitored for:



Since November, 2024, Eastington Wombles members have volunteered for over:



Volunteers needed

**Help record speeding vehicles
Make our roads safer**

**To join our friendly team, email:
eventscommittee@eastington.website**



Church of Christ the King

BY BARBARA LANG

Happy New Year to You All!

I have been reading a new book during the past couple of days. It is intriguingly called *Quest for the Grail* (Richard Rohr, 1994). Before you race off into thoughts of *Indiana Jones* or the *Knights Templar*, the book I am reading is more of a thoughtful muse as to how the Christian Church has become so irrelevant in our modern day lives.

One thing that really struck me is that the book was first written in 1994. So, the distancing between Society and the Church has continued to grow over the last 30 years. The author aligns the demise of spirituality in people's everyday lives to the huge growth seen of hopelessness and despair with all the human tragedies that this brings to bear.

In the wake of traditional Church no longer fitting into busy lives of the 2020's, various new types of Christian communities have been emerging. You may have heard of 'Café Church' or 'Messy Church', but have you heard about 'Art Church' meetings or even 'Hiking Church' or 'Allotment Church', 'Bikers Church' and 'Muddy Church'?

Friends, the traditional Christian Church that you may be aware of has expanded into so many other areas where people can come together to meet and explore the spiritual dimension to their life.

Here at the Church of Christ the King in Eastington we always welcome questions and love to help people find the answers they are searching for. This year, 2025, we are seeking to start new types of worship, new

types of Bible exploration and new types of getting to know each other and share life stories.

We imagine meals around a table and discussion about life's ups and downs. We also welcome your suggestions and ideas as we seek to become more relevant, more helpful and more closely entwined in the village of Eastington, Great Oldbury and beyond.

Why not give either Beck a call on 07511197265 or Barbara on 07570401365. We are both happy to meet up with you or take you for a coffee and have a chat about life and the big questions that arise.

Feel free to come and meet us on a Sunday at 11am. Our Service is held in the old Eastington Methodist Church Hall opposite the Butchers in Eastington postcode GL10 3AA. We look forward to meeting you always friendly faces and always a good time. We are praying for you.

Looking Forward to Meeting You Soon!

Youth Club

Youth Club continues to meet on Friday evenings at 7pm please ask for details.

Prayer Meetings and Bible Study

Prayer meetings are held twice a week on Zoom.

.....
Please contact Beck on 01453 827414 or 07511197265, email rebecca.burgin@pikelock.com or minister@coctke.org.uk for more information about events or general information about the Church.



St. Michael and All Angels Church

BY MIKE NAYLOR

Eastington Church on 2nd November. Thank you to all who took part and for giving your time and donations including cash which has also enabled the purchase of desperately needed tourniquets for soldiers on the front line.

We continue with our regular collection for Ukraine and a list of requisites is on display at the back of the Church. We are now also collecting candles and candle wax which are used to make new candles in regular sized food cans for Ukrainian troops sheltering in underground bunkers. So, if you have any old candles and clean empty cans, they too may be left at the church.

Library

The library continues to be a very popular asset in the church and is well used. New titles of up-to-date novels are always in demand. If you have any you would like to donate once the Christmas books have been read they can be placed in the box in the library.

Information

For further information on forthcoming events taking place in Eastington and across the Stroudwater Team you can ask to receive the weekly pew sheet by emailing: officestroudwater@gmail.com.

Rev Liz Palin:

tv1stroudwater@gmail.com

Rev Dave Bishop:

tv2stroudwater@gmail.com

Churchwarden Mike Naylor:

mike@mikenaylorsurveyors.co.uk

Church Services

The Christingle Service on Christmas Eve saw a packed Church with well over 200 attending. A big thank you to everyone who generously donated to the collection which raised an amazing £400.00 for The Children's Society. A big thank you to Broomhall's Butchers who once again supplied us with a splendid Christmas Tree.

We have our normal services on the 1st, 2nd and 4th Sunday in both February and March 2025 with the popular "Light Touch" service on the 2nd Sunday which in each case will be led by Revd Alice Wood. Look out for posters and on Facebook for the thought provoking subject to be covered for young and old! Lent begins on Ash Wednesday 5th March. There will be special services on this day throughout the Stroudwater Team of Churches details of which will be published on our website: stroudwaterchurches.org.uk

Stroud Food Bank Collection Point

Contributors gave very prolifically over the Christmas period and there was a heart-warming response to our appeal for Christmas goodies. Please keep in mind those facing financial difficulties especially during the harsh weather we have recently experienced and who are having to go without food.

Ukraine Appeal

There are some wonderful pictures on Facebook of youngsters in Ukraine who received Christmas parcels from the "Big Wrap" collection which took place in



An evening of Parisian-flavoured jazz and Gypsy Swing

Swing from Paris are a quartet of violin, guitars and double bass, inspired by the great swing bands of the 1930s and '40s.

Benny Goodman and Charlie Christian meets Django Reinhardt, Stéphane Grappelli and the Hot Club of France.

Expect stylish jazz and vintage swing.

"consistently intelligent, interesting and inventive"



- THE JAZZ MANN

"excellent band...diverse numbers, smart arrangements"

- JAZZ JOURNAL

Swing from Paris at Eastington Church

(St Michael and All Angels)

Friday 21 March 2025

7.30pm – 9.30pm (including 20min interval).

Doors and bar open 7pm

Tickets £16 in advance at swingfromparis.co.uk
A portion of all ticket sales go towards the church's fundraising appeal for a new roof.

Follow: swingfromparis
 swingfromparisofficial
 swing.from.paris

Listen: Spotify
 Listen on Apple Music
 bandcamp



Eastington Church Roof Appeal

BY GILL GLOVER



The Church Roof Committee (ECRA) formed in February last year and what a busy first year we have had. It's been heartening to have so much local support and shows how important this historic building is to many of you. In fact, local events and collections have raised more than £12,000. A great start!

In the coming year, as well as some planned events, we will be concentrating on grant funding applications to try and attract larger sums of money. This won't be easy but as ever we are filled with unshakable optimism (our motto for 2025). There aren't many grant makers who support church repairs and those that do often have stipulations attached e.g. *The Benefact Trust* require 30% of the project cost to have already been achieved, for us that is £90,000 - they will then consider a grant of 'up to' £15,000. The *Garfield Weston Foundation* require 50%, as does the *National Churches Trust*. So, as you can see, we will be up against it.

To really kick start the fundraising, we needed a reasonably large donation and for this we approached Eastington Parish Council. The Parish Council are fully behind the project and have provisionally agreed a generous amount towards the project which is great news. Once this has been confirmed, ECRA will be able to share the



details and hopefully gain further support. Watch this space!

Thursday 27th February

Pub quiz at the Badger, who have kindly offered to donate the proceedings to the appeal.

Friday 21st March

A real treat for Eastington! An evening of Parisian-flavoured jazz and Gypsy Swing (and bar) at St Michaels Church, with quartet 'Swing from Paris'. This is a ticketed event and is likely to be very popular so do get your tickets early to avoid disappointment. <https://tinyurl.com/y5xh2h73>

If you are interested in getting involved in any way, would like to join the Committee or make a donation please do get in touch.

Follow ECRA on facebook:
Eastington Church Roof Appeal – ECRA
 Project Leader, Mike Naylor: **01453 828682**
 Fundraiser, Gill Glover: **01453 828782**



Stroud & Cotswold Districts

“We’re planning a summer getaway to Greece and I’m worried we’ll forget something important, which could ruin the holiday. What steps can we take to make sure we’re fully protected and prepared if anything goes wrong?”

Booking a holiday can be overwhelming, especially if it’s been a while since you last went away. It’s unlikely anything will go wrong, but we’ve prepared a simple checklist to make sure you can relax into your holiday knowing you’re protected from the unexpected.

Check your passport is in date - especially for EU travel

Renewing your passport can take several weeks and isn’t something to leave until the last minute. Check the validity of your passport for your trip on GOV.UK by finding out the entry requirements of the country you’re travelling to.

If you’re heading to Europe, bear in mind EU countries don’t accept passports more than ten years old. This includes passports issued pre-Brexit, which may have longer expiry dates. Just remember, the golden rule for EU travel is: if your passport was issued over ten years ago, you’ll need to get it renewed.

Know your rights if something goes wrong

If your flight’s delayed long enough - usually two to four hours, depending on the journey

- your airline must provide access to food and drink vouchers, phone calls and emails, and accommodation if you’re delayed overnight. If it’s cancelled, you’re legally entitled to a full refund or replacement flight to help you get to your destination. You’re also entitled to compensation if your airline delays, loses or damages your checked-in luggage.

Get travel insurance

Although it’s an extra expense, travel insurance can cover many of the things already mentioned, like flight delays and lost luggage, but also things like a holiday cancellation and medical emergencies.

Citizens Advice recommends getting insurance as soon as you book a holiday to make sure you’re covered right away - but always check first to see if an existing insurance policy, or your bank account, covers what you need for your holiday. There’s no need to double up if you’re already covered!

The chances are your holiday will be problem-free, but early planning and preparation can make all the difference. If you need advice on a consumer problem, head to the Citizens Advice website (www.citizensadvice.org.uk).



THANK YOU!

ST MICHAEL & ALL ANGELS, FOR YOUR DONATIONS OF 327.00KGS, WHICH HAVE MADE A BIG DIFFERENCE TO LOCAL PEOPLE IN CRISIS ACROSS THE STROUD DISTRICT THROUGHOUT 2024.

Your generosity and continued support help change lives and bring hope to those in need.



Home Births in Eastington

Birthing at Home: a Brief Article for Mothering Sunday

In the last issue, we celebrated the birth of baby Olivia Wright who was born in Nupend, Eastington last year.

Since this publication, ECN has been in contact with two residents who have also experienced home births in the village. For Carol King, it was of her own birth in the 1950's; "I was born in Alkerton House (where



Swallowcroft housing estate is now) in December 1957. My mum was very ill after giving birth to me and had to have what was then called *The Flying Squad* out. Whilst manoeuvring the ambulance, it almost reversed into the pond! My Dad was left at home with me weighing 5.5lbs while they whisked my mum into hospital. All ended happily thank goodness."

In the early 19th century, home births were the norm, with women typically assisted by midwives or family members. The lack of medical knowledge and sanitation meant that childbirth was often a risky and difficult process, with high maternal and infant mortality rates. However, as the century progressed, advances in medical practices began to shape the way births were managed. The 20th century saw a major shift with the establishment of the National Health Service (NHS) in 1948,



making hospital births more accessible. The advent of anaesthesia, the development of prenatal care, and improvements in obstetrics contributed to a dramatic decline in maternal and infant mortality.

As childbirth moved from the home to the hospital, male doctors increasingly took control of the birthing process. The focus shifted from women's autonomy and natural processes to medical intervention, marginalising the women's role in what was once a deeply personal and familial experience.

Today, while hospital births are still the most common - and safest for many mothers - there has been a resurgence of home births as many women seek a more personal and natural experience. Despite the medical advancements, the choice of where to give birth has become an important aspect of the modern birthing experience and reflects a growing desire for choice and control over the birthing process.

As was the case for Eastington resident, Sarah Underdown, who gave birth to her youngest daughter, Eva, at home in Eastington on the 23rd Feb 2003. Sarah describes her births as "such special memories."

Thank you to Rosie, Carol and Sarah for sharing your experiences with us.

Down Memory Lane...

Thank you to Megan Timbrell for these scans.

Eastington Methodist Bible Class



Wesleyan Sunday School, 1927



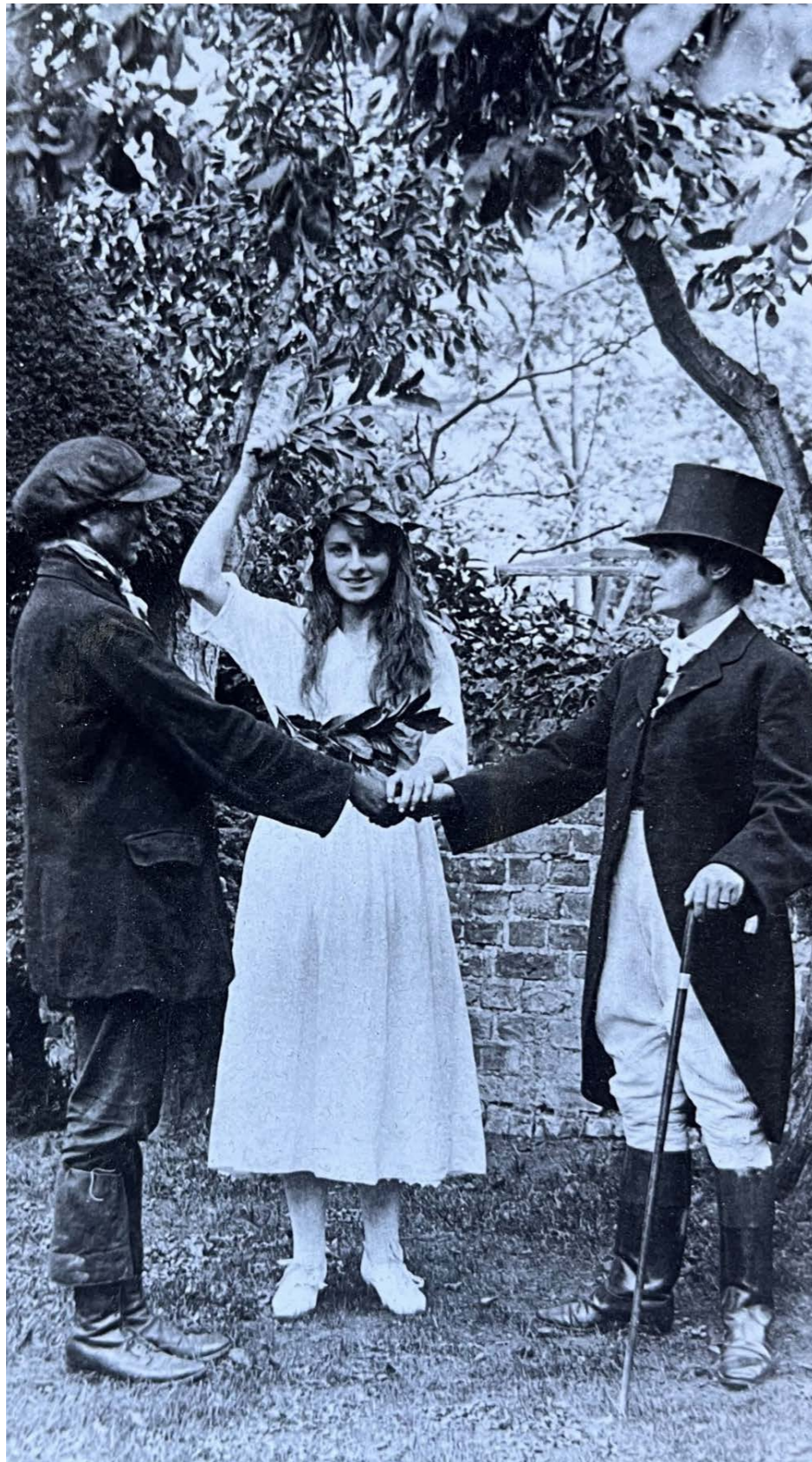
Eastington School, 1905

1932



A Mysterious Village Event

BY STEPHEN MILLS



The accompanying photo was given to me around 40 years ago by a local resident, sadly no longer with us.

It was a bit of a mystery then, and it still is now. The scene comprises a chimney sweep, a girl with a laurel garland, and what appears to be one of the gentry, but why this compilation?

Chimney sweeps traditionally signified good luck, wealth, and happiness. There are various tales behind this, but one dates back to the 1700s when a sweep is said to have saved the life of King George II by stopping his runaway horse and carriage. The king issued a Royal Decree that sweeps were bringers of good luck and that they should be treated with the greatest of respect.

Not so long ago, a sweep often made a surprise appearance at a wedding, wishing the couple luck, shaking the groom's hand and kissing the bride. The sweep also came to symbolise the start of Spring, sweeping away the gloom of Winter, sometimes accompanying the May Queen and her attendants. Now, what might be the significance of the girl's laurel



wreath and branch she is holding? In ancient Greece and Rome, it was worn on the head as a symbol of triumph and has since become regarded as an emblem of 'glory, prosperity, and spiritual evolution'. It also came to be a symbol adopted by Christianity. As for the toff – it appears that we are all friends, despite our different classes, and that peace and harmony prevails.

It's possible that this little tableau formed part of Eastington's May Day celebrations, originally a day of feasting and dancing in towns and villages across the British Isles dating from the medieval period. The girl's dress looks similar to those often worn by the May Queen's attendants, so perhaps there's a clue there. There were many traditions associated with the day, one of which was to wash your face with morning dew on May 1st to beautify the skin and bring good luck! (I might try that...). Coincidentally, on May 1st, chimney sweeps would often parade in the streets, generally making mischief and gathering coins from the public.

Of course, Eastington still has its annual May Queen celebration, re-introduced in the early part of the last century by John Rowbotham, school headmaster at the time. As well as dancing round the maypole, children took



part in processions and festivities that were held both at the school and in front of the Rectory.

It's a long shot, but can anyone shed any light on the photo - perhaps someone might recognise the characters involved and when the photo dates from?

STEPHEN MILLS HAS LIVED IN EASTINGTON FOR THE PAST 53 YEARS, AND ALMOST SINCE ARRIVING, HE'S BEEN RESEARCHING AND RECORDING THE VILLAGE'S LONG AND INTERESTING HISTORY. STEPHEN'S REAL INTEREST IS IN THE AREA'S RICH INDUSTRIAL PAST; HIS PHD FOCUSED ON THE WOOLLEN CLOTH MILLS OF THE STROUD VALLEYS. HE WORKS FOR PART OF THE INTERNATIONAL ENERGY AGENCY AND HE'S ALSO THE CHAIRMAN OF THE GLOUCESTERSHIRE SOCIETY FOR INDUSTRIAL ARCHEOLOGY.

The Green Bit

Hedge Cutting and Nesting Birds



As we approach the start of nesting season, it's important to consider the timing of hedge cutting.

The RSPB recommends trimming all vegetation before the end of February to avoid disturbing nesting birds. Cutting hedges later in spring can inadvertently destroy nests, eggs, or fledglings, so now is the best time to tidy up before the busy breeding period begins. It's illegal, in fact, to damage or destroy a bird's nest while it's in use under the Wildlife and Countryside Act of 1981.

Nests are usually built in secluded areas, like a hedge, where it is protected from predators. Birds like robins, blackbirds or sparrows use twigs, grass and other materials to create a safe space to lay their eggs.

After mating, the female lays a clutch of eggs, typically between 2-6 eggs, depending on the species. She incubates the eggs by keeping them warm for about 10-14 days,

with the male helping to bring food for her during this time.

After the incubation period, the eggs hatch, and the chicks (fledglings) emerge. At this point, they are very dependent on their parents for food and warmth. The parents take turns feeding them, often with insects or other small food sources.

As the chicks grow stronger and their feathers begin to develop, they become more active in the nest. After about 2-3 weeks, they are ready to leave the nest, a process known as fledging. Initially, the fledglings may be a bit wobbly and unable to fly well, but they'll soon gain strength and the ability to fly.

The other benefits to cutting hedges early are that deciduous plants are still dormant, so you can shape your trees, bushes and hedges without stressing the plant. Clearing this early also keeps public footpaths clear for pedestrians and removes blindspots for road-users. A well-maintained village is a welcome sight as spring approaches.

EASTINGTON SPRING GARDEN SHOW

Open to all residents and members of organisations in the parish of Eastington.

Eastington Village Hall

Saturday 22nd March 2025

1:30pm - 3:00pm

Admission 20p. Entries open from 9am - 11am.

Schedules and application forms available from the Post Office, The Badger, Broomhalls and via tevfs@outlook.com.

OUR SPONSORS



The Eastington
Allotment Society
(TEAS)



BORDERS • LAWNS • TREES
GARDEN MAINTENANCE
CONTACT: DALE HAINES
07733 454 846
Borders • Lawns • Trees • Fencing • Turfing • Weed Killing



Down the allotment

Where Community, Nourishment and Sustainable Living Come Together

Winter slumber is coming to an end.

The ground remains cold and damp, but the first signs of spring are beginning to appear. It's tempting to work on our plots, but as any local gardener will know, the clay soil presents a bit of a challenge. The ground is very soggy after the winter, and because clay holds moisture so well, it can stay waterlogged for quite some time. Couple this with the spring rainfall that is to come, and you might as well be planting seedlings into a pond of muddy water.

My spade makes way for the fork for now, to avoid compaction and aid aeration. Last year's delivery of manure remains, its size now reduced but still menacing in its smelly glory. This will help to help break up the dense, sticky earth.

Although the soil has a long way to go before it's fully workable, there are plenty of tasks to get on with. Sensible gardeners may have already sown hardy crops such as broad beans and peas, and maybe even early seeds indoors - in preparation for the spring show! Tools need to be checked, sheds cleared of mess, dead foliage piled high for a fire - all the while being careful of nearby wildlife.

The Parish Council have confirmed that the fencing surrounding everyone's plots is to be replaced - hopefully in time for the dryer season, as the entrance gate is currently out of use! The community shed is also ready for a spring clean and a new lick of paint.

But for now, it is a fairly quiet time on the allotment; a time of waiting. A sense of anticipation is in the air as the days gradually lengthen, and our to-do lists grow longer.



Jessica
Holcombe
Garden Design

**It's time for Dahlias...
well ordering them at least!**

Dahlias are a fantastic addition to any garden. They flower prolifically throughout summer, they make excellent cut flowers & they come in every colour! This is a fantastic time to order tubers and I am sharing my tips on getting started.



Why grow from tubers?

Opting to grow from tubers is the most cost effective way to grow Dahlias. You can buy individual tubers for under £5 and they will grow into established plants in the same year.

How to grow from tubers

- Check over your tubers, there is normally a stub of an old stem and then finger like tubes underneath. Remove any loose parts as they will rot.
- Get a clean plastic plant pot, ensuring the tuber fits comfortably inside. Fill with peat free compost and keep the top of the tuber slightly uncovered.
- Water well and put in a frost free spot. This time of year is cold and tubers need protection so a window sill can work well.
- As the stems appear only water when the compost feels dry to touch.
- When the stems have grown at least 2-3 sets of leaves you can cut the top (pinch out), this will encourage bushier plants & more flowers.
- Plant out only when all risk of frost has passed & protect from slugs.
- Throughout the summer keep on top of deadhead to encourage flowering.

 www.jhgardendesign.co.uk

 jess@jhgardendesign.co.uk

 [jessica_holcombe_garden_design](https://www.instagram.com/jessica_holcombe_garden_design)

 Jessica Holcombe Garden Design



Insights at SPINAVITA CHIROPRACTIC

When temperatures drop and the days become shorter, it's easy to lose motivation to stay active. However, maintaining regular movement during the colder months is essential for your physical and mental well-being. Staying active helps combat stiffness, improves circulation, boosts immunity, and even lifts your mood during darker days.

Cold weather doesn't mean you have to give up on your fitness goals; it's about adapting to the season. For outdoor activities like walking, layer up warm, and don't forget gloves, hats, and sturdy footwear with good grip to prevent slips. If icy conditions make outdoor exercise unsafe, try indoor options like stretching routines, yoga, or bodyweight exercises. Even household tasks like cleaning or food shopping can keep you moving.

Short on time? Break your activity into smaller sessions. Just 10 minutes of movement a few times a day can make a big difference. Focus on exercises that promote joint mobility and flexibility, such as simple stretches or gentle Pilates. If you're unsure where to start, there are plenty of online resources offering guided sessions tailored to various fitness levels.

Don't let the cold hold you back. Staying active now can pave the way for a healthier, more comfortable spring. Take control of your winter wellness by booking an appointment with Spinavita Chiropractic on 01452 883232 for advice and care tailored to your needs.

Spinavita Chiropractic has been at the heart of Hardwicke and Quedgeley for over 12 years.

Our dynamic team of Chiropractors, Sports Therapists and Massage Therapists are experienced in getting you mobile, pain free and supporting your overall health and wellbeing.

We hope to welcome you in soon.

Book an appointment

01452 883232

www.spinavita.co.uk

62 Westbourne Drive, Hardwicke,
Gloucester, GL2 4RU



DavidPrice PLASTERING 07976 298 089



Over 15 years of plastering
experience

Professional, reliable and
friendly service

Call today for a FREE
quotation

TILING

D. R. TILING

CERAMIC, PORCELAIN, MARBLE,
NATURAL STONE
UNDERFLOOR HEATING

ALL ASPECTS OF WALL & FLOOR TILING
FREE ESTIMATES AND ADVICE

TEL: 07805 341464

TEL: 01453 827770

Email: Daverollings@uwclub.net



RENEW DECORATORS

Stroud based Painter & Decorator,
providing high-quality interior
and exterior decorating services
in Gloucestershire and the Five Valleys

STROUDDECORATOR.CO.UK

07986 521 792

G&R WATSON

Plumbing Services

The small job specialist

Toilets Showers
Radiators Taps Immersions
Leak detection Ball valves

Call Chris 07836 264583

chriswatsonplumber247@gmail.com



Best rates, reliable and responsive

LYNDON HARRIS

PLUMBING & HEATING ENGINEER

Installation of OIL and GAS boilers
Pressurised Cylinders
CENTRAL HEATING systems

BATHROOMS completely refurbished
Routine plumbing tasks

GAS SAFE registered, fully insured
20 YEARS trade experience

12 Victoria Drive, Eastington

01453 821559 / 07966 750137

lyndonharris@live.co.uk

SP ELECTRICAL

(Stroud) Ltd

- Domestic
- Commercial
- Agricultural
- Testing and Inspection
- EV Charging
- Renewables



01453 765557 office@sp-electrical.co.uk
www.spelectrical.com

South Gloss Decorating

Painters & Decorators

Interior and Exterior
Affordable, Reliable, Professional

Dave Beauchamp

07739 382 524



www.southgloss.co.uk

www.facebook.com/southgloss



Extensions * Renovations * Kitchens * Bathrooms

07866 600 961

Email: langleyconstruct@gmail.com

No obligation estimates and consultations

SMITHS



As good as our word, as strong as our name

YOUR TRUSTED LOCAL SUPPLIER

ASBESTOS REMOVAL
CONCRETE SUPPLY
DEMOLITION AND CONSTRUCTION
DRAINAGE
GRAB HIRE
MUCKAWAY
PLANT AND MACHINERY HIRE
SKIP HIRE
WASTE MANAGEMENT

CONTACT US TODAY 01453 822227

WWW.SMITHS-GLOUCESTER.CO.UK

TERRASCAPES

Landscaping and Groundwork

We undertake any type of domestic and commercial landscape construction and groundworks including but not limited to:-

- Paving
- Decking
- Fencing
- Driveways
- Walls
- Turfing
- Foundations
- Floors
- Brickwork /Blockwork
- Drainage

Tel: 01453 759302

Mobile: 07866 515715

Website: www.terrascapes.co.uk

E-mail: info@terrascapes.co.uk

THE OLD COAL YARD, CHEAPSIDE, STROUD, GL5 3BN



The Home Remedy

PLEASE DONATE, FREE COLLECTIONS!

Contact us at stroud@thehomeremedy.org.uk to arrange a free collection

The Home Remedy Stroud, formally known as Stroud District Furniture Bank is a community interest company who collect unwanted furniture and recycle it back into the community through our shop and community referral program. We aim to build a truly circular economy by showing that no one need buy new furniture again. We are based in a renovated mill building in Brimscombe. Our referral program allows families to be referred to us to receive heavily subsidised furniture delivered to their door.

We offer employment through paid placements and flexible employment opportunities.

Since January 2024...

Recycled 88.14 tonnes of furniture

Delivered 257 items of free or subsidised referral furniture into 205 families

Come visit us at Brimscombe Mill, Brimscombe, GL5 2QN

N Bowen

Qualified Carpenter

Painting & Decorating

Kitchen Fitting

Building Maintenance

Any job considered

07928 552639



nigelbow@yahoo.co.uk

PIANO LESSONS

Piano lessons locally in Eastington, or online to anywhere in the world.

- All ages and abilities catered for
- Take exams or play for fun

I have taught piano and keyboards for several years - in Stroud and Aberdeen - and am now living in Eastington, and teaching both locally and online. Many of my pupils are currently taking exams.



Contact:

Elizabeth-Anne Ponting

079 1001 6565

ab.east.piano@gmail.com

Lowe's Picture Framing

Bespoke :: By Appointment

Established 1985

30% cheaper than the High Street

Framing of posters, oil paintings, watercolours, charcoals etc.
2-3 weeks turnaround.

Tel: 07973 449271

Email: mark@marklowe.biz

www.marklowe.biz

visit



Lowe's Picture Framing

For latest updates

Nupend House
Nupend,
Stonehouse GL10 3SP



Luxury Care Home Community

The Hollies Nursing Care Home
Holly Oak Dementia Care Home

The **Hollies**, renowned for its excellence in nursing, dementia and residential care provides the ultimate in state-of-the-art accommodation. Spacious, beautifully designed rooms, suites and living areas along with pretty gardens provide residents with a high quality of living. Exceptional dining caters for the most discerning preferences and needs.

At the Hollies, care is not just something we offer, it's at the core of who we are. We treat every resident as an individual and work hard to tailor our person-centred services and activities to support their every need.

Bessys
TEA ROOM

THE OLD
ENGLISH PUB

Kayes
HAIR & NAILS

Community living connecting families and friends
in a welcoming environment

Bessys Tea Room
for special treats
and parties

**The Old English
Pub** for social
gatherings

Kayes Hair & Nails
for beauty and
wellbeing

The Terrace for
events and outdoor
entertainment

Excellent Reviews
Limited spaces available

the gold standards
framework
carehome.co.uk

Call Jo or Sadie now:
01453 541400
info@thehollies.co.uk

We welcome immediate and planned admissions.
Discover more at thehollies.co.uk
Drake Lane, Dursley GL11 5HA

IP LEEPER PROSSER
SOLICITORS

OUR SERVICES

- Residential Conveyancing
(Sales, Purchases & Remortgages)
- Commercial Property
- Wills
- Probate
- Trusts and Inheritance Tax
- Powers of Attorney

Tel: 01453 791461

Web: www.leeperprosser.co.uk

E-mail: enquiries@leeperprosser.co.uk

40 High Street, Stonehouse, Gloucestershire, GL10 2NA

Opening Times: Monday to Friday - 9am to 5pm

Help for when it hurts

SEVERN-SIDE OSTEOPATHY



Osteopathy - a natural, non-invasive way to
improve overall health and wellness...

- * Help for aches, pains and stiffness, from head to toe
- * Sports injuries
- * Women's health - before and after pregnancy
- * Your family's health in safe hands, from young to old
- * Off road parking and partial disability access available
- * Member of The Allied Health Professions

www.severnsideosteopathy.uk

Caroline Tosh
BO MSc FSCCO

01452 740818

admin@severnsideosteopathy.uk

Registered with the General Osteopathic Council




ALLEN-WHITE

FUNERAL DIRECTORS



Independently owned funeral directors - spanning 75 years in the Gloucestershire area.
Pre-paid funeral plans, friendly professionally trained staff and funerals that are as individual as you are.

Telephone (24-hours): 01453 822 409 | www.allenwhitefuneraldirectors.co.uk

BATH ROAD GARAGE

Eastington

www.bathroadgarage.co.uk

01453 822907

the Good Garage Scheme 

MOT TESTING CENTRE

FOR PETROL OR DIESEL

SERVICING & REPAIRS

FOR ALL MAKES & MODELS

TYRES, BATTERIES & EXHAUSTS

LASER 4 WHEEL ALIGNMENT

FREE LOCAL COLLECTION

FREE LOCAL DELIVERY

BY APPOINTMENT



Fully mobile-approved workshop:
home, site or storage.

Caravan industry trained,
covering Gloucestershire and all
surrounding counties.



- Servicing and repairs
- Accessories supplied and fitted,
including movers & solar panels
- Swift approved workshop
- Approved for warranty work on
major manufacturer appliances.

vtbcaravans@googlemail.com
www.vtbcaravanservices.co.uk
07754539100 | 01453 299261

KB Coaches

VIP TRAVEL

PRIVATE HIRE

19 - 49 - 74 Seater Coaches

Hillview Garage,
Eastington, GL10 3AJ

01453 825774

kbcoaches@yahoo.co.uk

www.kbcoaches.co.uk



DIAL - A - CAB TAXIS



07851 - 507 - 207

01453 - 272 - 222

LOCAL AND LONG DISTANCE

FAST & FRIENDLY SERVICE

Martin Pollard



Your Local Accident Repair Centre

"No job too large or small!"

01452 740025

Insurance Approved

Courtesy Cars Supplied

Car & Light Commercial Repairs/Refinishing

Body Jigging Facility & Welding Technology

Computerised 4 Wheel Alignment System

Frampton-on-Severn Industrial Park, GL2 7HE | martinpollard@hotmail.com

WESTEND OFFICE SUITES



LOCAL QUALITY OFFICE SUITES

- Air Conditioning
- Kitchenette & WC Facilities
- Generous Car Parking
- Great Rural Location

Westend Office Suites, Grove Lane, Westend,
Nr Stonehouse, Glos GL10 3SL

Telephone: 07760207194

Email: enquiries@westendofficesuites.co.uk

www.westendofficesuites.co.uk

Stepwise Foot Care.

Mobile service in the comfort and convenience of your home!

- ★ Medical pedicure.
- ★ diabetic foot health.
- ★ corn and callus removal.
- ★ misshapen nail correction.
- ★ ingrown nail treatment.
- ★ cracked heel treatment.
- ★ fungal nail treatment.
- ★ verrucae treatment.

And much, much more!

Start your foot health journey now!

Call Lizzy B.Sc (hons), FHP, MCMA.
07387822770.



Hair Salon

Dry Trims
Cut & Blow Dries
Half or Full Head Foils
Hair Styling and Up-dos

01453 825081

BondandCo

Alkerton Road, Eastington

Lynne Jessett Floristry

Flowers for all occasions:

Weddings
Funeral Tributes
Gift Bouquets
Workshops

01453 825136 | 07815 984857

info@lynnejessettfloristry.com

www.lynnejessettfloristry.com



KOPEND CREATIONS

FLOWERS FOR ALL OCCASIONS

Weddings - Funerals - Parties - Births
Anniversaries - Gift Bouquets
Flower Arranging Classes

Tue - Fri 9:30am - 5:00pm
Saturday 9:30am - 3:00pm

paul@kopendcreations.co.uk
01452 224473 | 07742 933331

www.kopendcreations.co.uk



- Gel manicure
- Footlogix Pedicures
- Waxing

Ultimate Beauty By Louise

- Dermaplaning
- Spraytan
- ... and lots more

Beauty, Cosmetic & Personal Care
Fully insured

07769 273893

Summerhouse Salon
3 Brownings Close, Eastington

J. BROOMHALL Ltd.

Established in Eastington 1898

Supplying
quality local meat

through four generations

We also offer a comprehensive
service to livestock producers.

01453 823122

www.jbroomhallltd.com

SUPPORTING THE RURAL ECONOMY



EASTINGTON FARM SHOP
MIDDLEHALL FARM

Fresh seasonal fruit and vegetables
Home-bred beef
Our own milk vending machine
Lots of other goodies

Delicious coffee and cake
All-weather seating and woodburner
Child-friendly outdoor space

OPENING TIMES

Tuesday - Saturday: 09:00 - 17:00
Sunday: 10:00 - 13:00

01453 823655
www.eastingtonfarmshop.co.uk

yes you can with Slimming World

A warm welcome awaits everyone at
Eastington Slimming World Group

*Every Wednesday at 5:30pm
at the Village Hall*

Contact Sue: 07590 667307

... to get that Slimming World Feeling!

BARK
SIDE
OF
THE
GROOM



Bark Side of the Groom is open at Krate Village,
Whitminster! (Next door to the Whitminster Inn)

We offer a 1-1 grooming experience and provide
bespoke grooms tailored to your dog.
Plenty of free parking and later appointments
available!

Get in touch to request some availability or for
information on pricing.

07591135248

Aifa@barksideofthegroom.co.uk

www.barksideofthegroom.co.uk

Find us on Instagram & Facebook

Krazy k9s limited

Time to be best friends again.



Dog Training and Socialisation

- ✓ Puppy Socialisation & Delinquent Dogs
- ✓ Rescue Rehabilitation
- ✓ Competitive Obedience
- ✓ Fun & Competition Agility

**1 to 1 tuition tailored to you and
your dog's needs or class sessions**

07748 183739

www.krazyk9ltd.co.uk

facebook: Krazy K9's Dog Training



COFFEE HOUSE WITH 7 ENSUITE BEDROOMS

OPEN 7 DAYS, 8AM-4PM



MUDDY BOOTS & DOGS WELCOME

ARTISAN COFFEE & TEAS

FRESH PASTRIES, CAKES,
SOURDOUGH TOASTIES & MORE!

TAKEAWAY / EAT-IN

PLENTY OF INDOOR & OUTDOOR SEATING

GROUP BOOKINGS WELCOME!



WWW.THELAZYGOOSE.CO.UK

EASTINGTON, GL10 3AA

FEBRUARY

1st February, 10:00am
Every Saturday

Stonehouse Saturday Stalls
@ Stonehouse High Street

2nd February

National Hedgehog Day!

3rd February, 7:30pm
Every Monday

Board Games Night
@ The Badger

4th February, 2:30pm
Every Tuesday (For over 60s)

Coffee & Conversation
@ The Badger

6th February, 10:00am
Every Thursday

Coffee, Bingo & Chat
@ Eastington Village Hall

6th February, 7:00pm

ECLT Annual Board Meeting
@ Eastington Village Hall

13th February, 7:00pm

Parish Council Meeting
@ Eastington Village Hall

14th February

St Valentine's Day

15th February, 8:00pm

Karaoke & Disco
Live Music: Elsie
@ The Badger

17th February

Half Term
@ Eastington Primary School

19th February, 2:00pm

Heart of the Village Pop-in
@ Eastington Village Hall

23rd February, 10:00am

Wombles Litter Pick
@ TBD

26th February, 10:00am
Every Last Sunday

Saxon Barn Market
@ Saxon Barn, Priory Farm

27th February, 7:30pm

Quiz Night
(All proceeds to be donated to ECRA)
@ The Badger

MARCH

1st March

St David's Day

4th March

Shrove Tuesday (Pancake Day)

11th - 14th March

Live Show: Cheltenham Festival
@ The Badger

13th March, 7:00pm

Parish Council Meeting
@ Eastington Village Hall

13th March, 7:30pm

Bingo Night
@ The Badger

15th March

'Sham Rock' St Patrick's Party
@ The Badger

17th March

St Patrick's Day

17th March, 11.59pm

ECN Survey Deadline

19th March, 2:00pm

Heart of the Village Pop-in
@ Eastington Village Hall

20th March

Spring Equinox

21st March, 7:30pm

Live Music: Swing from Paris
@ St Michaels & All Angels

22nd March, 1:30pm

Spring Garden Show
@ Eastington Village Hall

27th March, 7:30pm

Quiz Night
@ The Badger

29th March, 1:30pm

TwoCan Open Day
@ Old Methodist Church

29th March, 4:00pm

Mum's & Mojitos Night
Live Music: The Two Beatles
@ The Badger

30th March

Mothering Sunday

30th March, 10:00am

Wombles Litter Pick
@ TBD

For further details about these events, see online or email us. If you would like to add an event in the next issue, please email: articles@eastington.website.