



Eastington Community News

A free, locally produced
publication celebrating
community in
Eastington.

COVER BY:
KAREN GREEN

ISSUE 207
Dec - Jan 25



Business | Community | Environment | Events | History
News | Youth

Eastington Village Hall



For your function or group meeting

Central village location
£8 per hour
Kitchen, tables & chairs
Stage, toilets etc

**Check availability and
book on-line:**

evh.eastington.website

Eastington Community Centre

Owen Harris Memorial Ground



**email: enquiries@ohmg.org.uk
web: www.ohmg.org.uk**

The main hall can host 80 people seated
or 150 standing.
Small meeting room available.
Fully equipped kitchen and bar available.

Eastington Community Centre,
OHMG Building, Snakey Lane,
Eastington, GL103AQ

Editor's Note

Welcome to issue 207.

And just like that, 2024 is coming to a close. The ECN team would like to wish the village and surrounding areas a very Merry Christmas and a Happy New Year. Thank you for your continued support throughout the year - we look forward to sharing more community spirit, stories and updates with you all in the year ahead.

See you in 2025!

Until next time,
The ECN Team x

p.s. Some useful info:

The deadline for the next issue is: **13/1/25**, to be delivered around: **1/2/25**.

Space is limited - we may omit, edit or shorten articles. The views expressed in ECN are not necessarily those of the ECN team.

If you would like to see this magazine in colour, visit the Eastington Hub at <https://eastington.website>.

articles@eastington.website
 ecn.eastington.website
 Eastington Community News

CONTRIBUTERS:

Karen Green, Gill Glover, Louise Partridge, Jenny Winfield, Lynne Birch, Gareth Parker, Rosie, Sue Withers, Marianne Simpson, Richard Maisey, Trish Pyne, Rosie Wright, Linda Seeley, Tom Low, Paul Halas, Simon Chapman, John Newton, Barbara Lang, Mike Naylor, Stephen Mills and Megan Timbrell.

TEAM:

SUE HALAS
Admin/Advertising

LUCINDA BROCKLEHURST
Artwork/Design/Editorial

JAN LOW
Support

GILL GLOVER
Distribution

PRINTER:



DELIVERERS:

Eight hundred magazines later... thank you to the twenty-seven lovely people who have delivered this issue.



King's Stanley Village Hall

Large, modern village hall
with a capacity of 200 people.
Excellent, up-to-date facilities,
stage and bar.

The perfect setting for your
wedding, birthday or celebration.

Call Pam Culver on
01453 821 153

ksthbookings@gmail.com

www.kingsstanleyvillagehall.org.uk

ECN Submissions

For articles, stories, photos,
artwork, events and front cover
submissions, email:

ARTICLES@EASTINGTON.WEBSITE

To update or submit a new
advert, email:

ADVERTISING@EASTINGTON.WEBSITE

(Discounts available)

(Advert design and photography
services available)

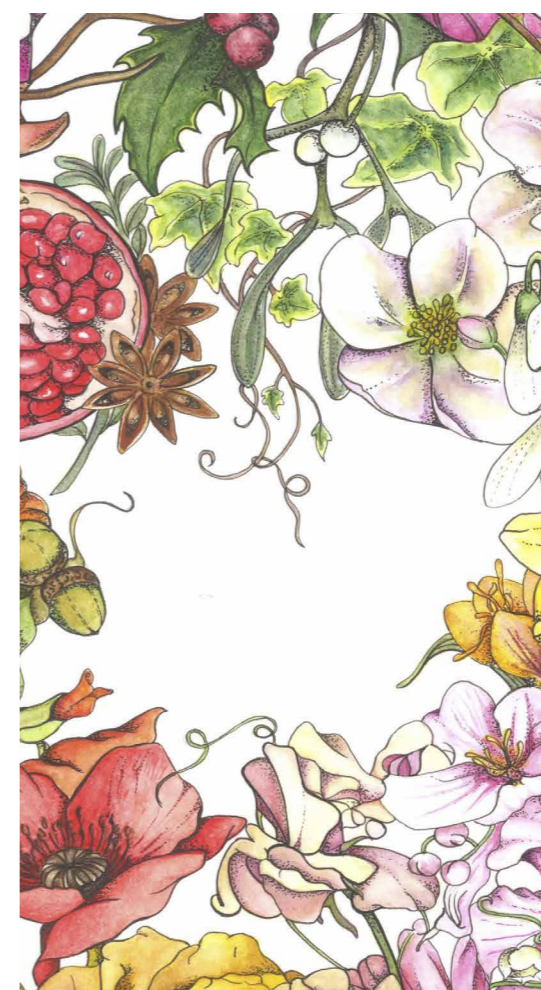
Thank you to all those who
already make this publication
possible, **please support them.**

COVER BY: Karen Green

Karen Green works as a botanical artist, painting flowers, fruits and vegetables. She explores themes of femininity, loss and healing through the botany and life cycle of plants; flower language and their use in medicine, folklore and religion. She occasionally runs art workshops at Eastington Farm Shop. You can contact Karen via her website and socials:

**www.karengreenart.com
fb/insta: @karengreenart**

TO SUBMIT YOUR OWN
WORK FOR THE FRONT
COVER OF THE NEXT ISSUE,
PLEASE EMAIL: **ARTICLES@EASTINGTON.WEBSITE**.
ALL AGES AND MEDIUMS
WELCOME.



Contents

EVENTS.....	04
YOUTH.....	07
NEWS.....	13
ENVIRONMENT.....	20
COMMUNITY.....	22
HISTORY.....	28
BUSINESS.....	31



EASTINGTON
EVENTS COMMITTEE
presents

EASTINGTON CHRISTMAS LIGHTS

TRAIL & COMPETITION

FROM 16TH DEC
winner announced on
22nd Dec

FAMILY FUN

**ANYONE
CAN ENTER**

TO ENTER, EMAIL: eventscommittee@eastington.website



Candlelight Christmas Sing Along

7:00pm
Saturday 14th December

Free entry

Mulled wine
Mince pies
Santa and his sleigh

Join us for an evening of carols and
favourite Christmas songs.

Featuring ukelele music from
Vale Strings & Singers
and more!

**at St Michaels and All Angels
Church**

 THE ROTARY CLUB
OF SEVERN VALE

 Eastington
Church
Roof
Appeal

 EASTINGTON
EVENTS COMMITTEE

It's Back!

Christmas Xtravaganza 2024

FRIDAY 6TH DECEMBER 2024
5:30PM – 7:30PM

GREAT OLDBURY PRIMARY ACADEMY
Veterans Way, Stonehouse, GL10 3WH

CAROL SINGING • CRAFT STALLS
HOT FOOD & DRINKS • RAFFLE

FREE ADMISSION

CRAFT STALLS FROM £10
BOOK BY TUESDAY 3RD DECEMBER
<https://tinyurl.com/9xyvb83m>

For more information on booking
Please contact the school:
admin.GOPA@glatrust.org.uk

BOOK NOW

www.greatoldbury.org.uk



TwoCan Theatre Newsletter

BY LOUISE PARTRIDGE

You may have noticed some building work taking place at The Old Methodist Church over the past few months.

TwoCan has been lucky enough to receive some funding to start to redevelop the building, not only to enable it to be more accessible for everyone, but also to try and hold back the damp and cold that the old building has been suffering from. Over the next few years TwoCan aims to redevelop the building in phases adapting the kitchen, toilets, hall areas and outside spaces.

The first phase of the work has focused on the kitchen. A TwoCan kitchen needs to be able to provide an area that can be used by staff, users and their families, to make refreshments, re-heat meals and host seasonal events, as well as a place to prepare and cook meals within the independence training programmes it offers.



TwoCan aims to expand the size of the kitchen and combine functionality and

style, providing the freedom for all users to enjoy, whether it's just making a cup of tea or three course meal. It aims to be ideal for mixed uses and mixed users and by increasing its size and replacing thoughtfully positioned appliances, rise and fall counters and sinks, larger kickboards to provide ample room for wheelchair footplates and easy to access storage solutions, will make it a wonderful space that will enable the whole community to enjoy.

As well as working hard to fundraise for the building, TwoCan is also looking for sponsorship to enable all their users to have a TwoCan hoodie. Since moving to Eastington, TwoCan has gained a new website and logo and as a result needs to update all its hoodies to reflect the rebrand. As well as a bright moving advert raising an awareness of the charity, a hoodie helps to create a sense of unity, creating a visual symbol of belonging, connecting everyone to TwoCan's belief that **"with two you can"**. It also fosters a sense of pride and collaboration. TwoCan is looking for a company, business or person who would be able to fund this project and become a new supporter. Some of TwoCan's group made a short video showing off the sample batch of hoodies that have been made and would welcome anyone who would like to see it to use this link: <https://vimeo.com/1012470761>.

TWOCAN IS AN INCLUSIVE THEATRE COMPANY BASED IN EASTINGTON. YOU CAN FOLLOW THEM FOR MORE UPDATES ON FACEBOOK: [@TWOCAN INCLUSIVE](https://www.facebook.com/twocan_inclusive) OR ON THEIR WEBSITE: WWW.TWOCANTHEATRE.ORG.UK.

LOUISE PARTRIDGE IS EXECUTIVE PRODUCER AT TWOCAN. YOU CAN EMAIL LOUISE AT: LOUISE@TWOCANTHEATRE.ORG.UK.



Eastington Playgroup Newsletter

BY JENNY WINFIELD

This term has so far been full of painting, exploratory play, and the odd disco here and there.

We started the term looking at the stories of Roald Dahl, picking blackberries to crush and use to paint characters from *Charlie and the Chocolate Factory* and looking for golden tickets in cocoa powder.

We explored the story of the colour monster and spoke about our feelings and engaged in some yoga to be calm and mindful.

We enjoyed time outside at the allotment, tidying up the environment and digging in our flower beds to prepare them for the winter.

We have been looking at the topic of space and have read factual books to learn about rockets, how long it takes to get to space and what it is like on the moon. We made a space station and the children used recycled construction to make their buttons and tools that they may need.

We are now in full swing preparing for Christmas. We look forward to a term of glitter, songs and VERY excited children (and staff). Please contact us on 079773 42742 or email us to arrange a visit if you require a space for your child.

.....
EASTINGTON PLAYGROUP HAS BEEN PROVIDING CARE AND EDUCATION FOR LOCAL FAMILIES SINCE 1998. THE PLAYGROUP IS OPEN ON MONDAYS TO THURSDAYS FOR CHILDREN AGED TWO AND A HALF TO FOUR YEARS.



[HTTP://WWW.EASTINGTONPLAYGROUP.CO.UK](http://www.eastingtonplaygroup.co.uk)
EASTINGTONPLAYGROUP@HOTMAIL.COM
MOBILE: 07977 342742

Eastington Primary School Newsletter

BY LYNNE BIRCH



In school Class 5 have been selling poppies in aid of *Royal British Legion* – we do this each year so those who have been injured protecting us can receive support.

We have reflected on why we have *Remembrance Day* each year. Here are a few of our thoughts.

"It's a day of respect and we have a two minutes silence to remember the people that sacrificed their lives to save us so we can live a happy and a peaceful life. They stopped the war at 11:00am on 11th November so that's why we do the two minutes of silence at that time." *Harry Antell*

"For me, it is a peaceful time and to remember what happened when the war ended. To celebrate, I like to donate money and learn more about it. At 11:00am, everybody gathers to have a two minute silence to remember the people

that gave their lives for us." *Hugo Hawtin*

"On remembrance day, I think about all the people who fought in the war for us, those who died and tried their very hardest to stay alive in World War One and Two. On the 11th day of the 11th month at the 11th hour, we remember the people who died in war. That's why we have a two minute silence on the 11th hour of the 11th month." *Mila Stradling*

"We can remember the people that helped us and sacrificed themselves for our country and that we can say thank you for helping us." *Rhumer-Blu Gill*

In our school, we have different ways to show our support for remembrance day. Some represent the day with pin badges, ribbons and bracelets, in addition to the paper poppy. Below are some members of class five proudly showing their support.

.....
EASTINGTON PRIMARY IS A COMMUNITY SCHOOL LOCATED ON MILLEND LANE IN CHURCHEND.

[HTTP://WWW.EASTINGTONPRIMARY.CO.UK](http://www.eastingtonprimary.co.uk)
TELEPHONE: 01453 822922



William Morris School Newsletter

Connecting with the Community

BY GARETH PARKER

Hello! My name is Gareth Parker, and I'm the Headteacher at William Morris School in Eastington, a special school run by local charity Novalis Trust.

For those who may not have heard of us before, William Morris School is an independent, day and boarding school for children aged seven to nineteen with complex learning needs. We're one of only a few schools in the country to adopt a truly trauma-informed approach in all we do, helping our pupils to flourish in a supportive and caring environment. We opened our doors in September 2022. Prior to this, our site was home to William Morris College which provided further education courses for post-16 students.

While our pupils have complex needs, our goal is simple: to help every one of them thrive and achieve their full potential. We offer a broad curriculum, with a particular focus on arts, crafts and horticulture as well as woodwork and music. We'll soon be welcoming our first group of boarders, and we're excited about the new opportunities this will bring.

As part of our commitment to the community, we're keen to strengthen our connections with local residents and businesses. Whether through events, volunteering or partnerships, we hope to foster relationships that benefit both our pupils and the wider community.



In future editions, we hope to share our pupils' artwork and creative writing, along with updates on school events where I look forward to meeting many of you in person. Thank you for welcoming us into the community!

Gareth Parker
Headteacher,
William Morris School

gareth.parker@william-morris.org.uk
www.novalis-trust.org.uk



Children's Clubs

New and ongoing clubs in (and around) Eastington, all in one place.

MONDAYS

Preschool Dance Class

with Amy Addle
9:15am @ Eastington Village Hall

TUESDAYS

Frampton-On-Severn Toddler Time

with Frampton Toddler Group
9:30am @ Cadbury Hall

Children's Dance Class

with Fusion Dance
3:45pm @ Eastington Village Hall

Drama Class

with Drama Kids
From 4:00pm @ The Community Centre, OHMG

Football Club

with Stonehouse Town Youth Football Club
6:30pm @ Wycliffe College

WEDNESDAYS

Nature Tots

with Wildlife Trust
Monthly, 10:00am @ Coaley Peak

Baby Bounce and Rhyme

with Gloucestershire County Council
10:30am @ Stonehouse Library

Little Explorers

with Little Learners
2:00pm @ Great Oldbury Primary Academy

Street Dancing Class

with Defined Dance
From 4:30pm @ The Community Centre, OHMG

THURSDAYS

Youth Theatre Club

with TwoCan
5:00pm @ Old Methodist Church Hall

Cubs

with Frampton-On-Severn Cubs
7:15p m @ Frampton Scout Hut

FRIDAYS

Scout Club

with Stanley's Scouts
7:15pm @ Leonard Stanley Scout Hut

Youth Club

with Church of Christ the King
7:00pm @ Eastington Methodist Church

SATURDAYS

Preschool Dance Class

with Amy Addle
9:00am @ Eastington Village Hall

Gymnastics Class

with Flip and Twist Gymnastics
@ Park Junior School

SUNDAYS

Running Club

with Junior Parkrun
9:00am @ Oldends Lane Playing Fields

For further details about these clubs, see online or email us.

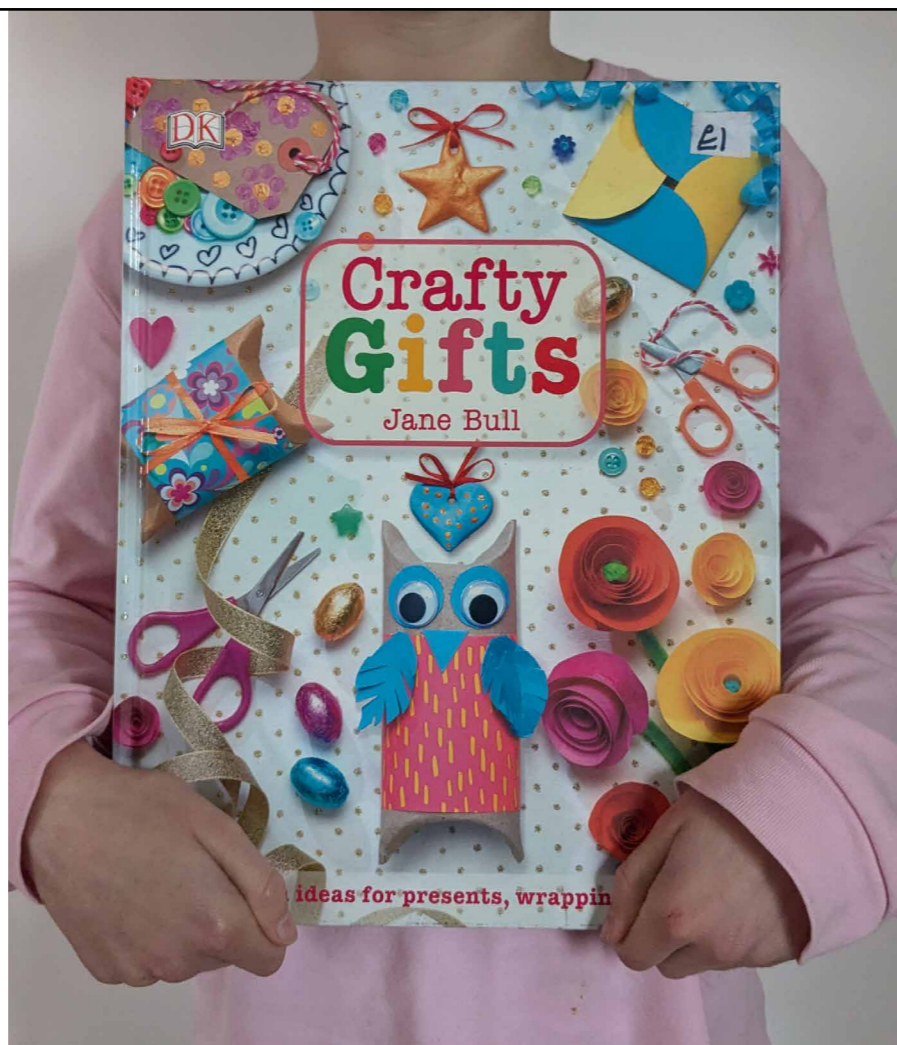
Jay's BOOK Corner

Guest review by:
Rosie, age 7

Title:
Crafty Gifts

Author:
Jane Bull

Genre:
Non-fiction, art



What is *Crafty Gifts* about?

"This book is about crafting stuff. You can craft little hand things that you can pop into your pockets called pillow boxes. If you look on the front cover there's an owl - that is the pillow box. I have made a few of them, but not the owl. Also you could make something that I made in that book too - it's like a bath fizzy which you can choose the colour of which you can pop in the bath to fizz and it colours the bath water and also it smells nice. Another thing you can make is with some buttons you can stick them down and make a shape with them with googly eyes on the front. You can also make little gift boxes that you can put in your pocket and fill up with some presenty stuff. I've also made the salt dough recipe inside."

What is your favourite part and why?

"My favourite part is looking at the pictures because I love to think of what I can do and what stuff I can have from this book."

Who would you recommend this book to and why?

"A crafter lover because it's full of lots of different kinds of crafting stuff."

Congratulations to Rosie for winning the ECN book review competition!

Crafty Gifts is written for children of all ages (and adults, too!).
Published by DK in 2017. ISBN: 978-0-2412-7580-1

WOULD YOU LIKE TO ENTER THE NEXT COMPETITION? ARE YOU UNDER SIXTEEN? PLEASE EMAIL: ARTICLES@EASTINGTON.WEBSITE WITH YOUR ANSWERS TO THE QUESTIONS ABOVE AND A PHOTOGRAPH OF YOUR CHOICE.



Heart of the Village

BY SUE WITHERS

18th September

Well once again the weather was kind to us. The famous teapot sign was put in place on the village hall railings to let people know that the event was on. The cake donations arrived at 1:00pm which consisted of cornflake cakes, Victoria sponge, blueberry & lemon cake, fruit cake, sticky toffee cake and apple cake.

Unfortunately, due to colds and covid, helpers were limited, but we still put on a good show and welcomed our guests through the doors at 2:00pm. It wasn't long before the room filled up and the tea, coffee and cakes were served to the tables with a smile.

The raffle was drawn at 3:00pm and three guests went home with wine, toiletries and a solar garden light - all these items very kindly donated to us and a BIG THANK YOU to the people that brought new items for next time.

We had an anonymous phone call the other day from a gentleman wishing to donate some cake plates and silver platters, then he kindly delivered them to one of the organisers doorstep - whoever you are, thank you very much.

Our new mascot "Roger the Dog" has taken pride of place on the front table and will remind us all what this pop-in is all about. It was also especially lovely to see a new addition to our pop-in, as she was just eleven days old! Also our other special lady was Ruth Pope who is one of our organisers who celebrated her 90th birthday. Carol Novoth, our Stroud District Council community



warden, popped her head through the door and she was amazed to see all our local residents enjoying themselves and hopefully she will be able to return again.

23rd October

This time we served up a starter of homemade hot pumpkin soup and freshly baked bread rolls, cheese straws and cheese pinwheels followed by freshly baked homemade cakes. We would also like to thank Carly of "Made by Carly" at Whitminster for her gorgeous chocolate brownies she kindly donated.

Thank you to whoever dropped off another bottle of wine for the next raffle. We were extremely touched by one of our regular guests donating her mothers treasured tea service and we certainly will get good use out of it and it is sincerely appreciated.

Our next pop-in dates for your diary are:
11th December & 22nd January. Please do spread the word.

Sue W x

HEART OF THE VILLAGE IS A COMMUNITY-DRIVEN POP-IN EVENT THAT OCCURS ONCE A MONTH AT THE VILLAGE HALL. LOOK OUT FOR THE TEAPOT CHALKBOARD SIGN ERECTED ON THE RAILINGS OUTSIDE ON THE DAY.

YOU CAN CONTACT SUE WITHERS ON: **07949 548 539**

Eastington Parish Council Update

BY MARIANNE SIMPSON

By the time you read this you may have noticed that work has started on the pavement widening project opposite Bath Road Garage. This will make it much safer for all those walking along this stretch of pavement.

We have been advised that a long-awaited speed camera is to be installed on Bath Road in December. This is being funded by Gloucestershire County Council. Speed signs will be installed early next year, which should act as a deterrent and hopefully reduce traffic speeds along Bath Road. The system relies on volunteer verifiers who are needed to review the camera footage and verifications must be cleared regularly. We have had some offers of help with this, but more volunteers are needed. Please contact the parish council if you can help with this. The scheme enables verifiers to request ten police letters per week to be sent to speeding offenders.



The Parish Council has been reviewing the Snakey Park Play Area and has been consulting with play area providers to improve the safety surfacing around the play equipment. New surfacing should be installed in the new year, weather permitting. In addition, we are considering a couple of new pieces of play equipment as the play area is heavily used and some of the equipment required repairs following the annual safety inspection which was carried out in May. New fencing and gate posts around the allotments have also been scheduled.

We have recently installed a new defibrillator on the outside of the phone box in Nupend. This takes the number of defibrillators in the village to seven, which is great as they are known to save lives when someone has a cardiac arrest. There are over 30,000 out-of-hospital cardiac arrests each year in the UK, but less than one in ten people survive. Every minute without CPR and defibrillation after a cardiac arrest can reduce the chance of survival by up to 10 per cent. Early CPR and defibrillation is vital to give someone the best chance of survival. Anyone can use a defibrillator. You do not need training. Once you turn it on, it will give clear step-by-step voice instructions. While you do not need to be trained to use a defibrillator, having training can ensure you are familiar with the defibrillator and ready to act quickly in an emergency. The Parish Council will be arranging Defibrillator Training over the next couple of months. Please do take advantage of this opportunity and book a place on the training by contacting the Clerk. For information, the locations of the seven defibrillators are listed below:

- Westend Office Suites
- St Michaels & All Angels Church
- The Old Badger Inn
- OHMG Community Centre
- John Stayte Services
- Travelodge, Chipmans Platt Roundabout
- Nupend phone box

A further defibrillator is being planned for Nastend.



The whole Parish Council would like to finish by wishing all our residents Best Wishes for the Christmas Season and a Happy New Year.

Parish Clerk: clerk@eastington-pc.gov.uk
Tel: **01453 79961 - 07747634217**
Parish Chair: muriel.bullock@eastington-pc.gov.uk

Stroud District Council Update

BY CLLR RICHARD MAISEY



Listening Fish, Divers, Salt Marshes and A Cup of Tea in the Village Hall.

Quite a lot of my time recently has been spent talking and learning about fish deterrents, outflows from nuclear power stations and salt marshes. As you may be aware, EDF are building a new nuclear power station at Hinkley Point C. Their original proposal contained a provision under which an Acoustic Fish Deterrent (AFD) was to be installed to deter fish from being drawn into the power station's cooling system. EDF do not wish to install this AFD any more and instead (in compensation for all the fish which will be killed) wish to create salt marshes. There are four possible sites for these marshes, one of them is at Arlingham. At a heated meeting in Arlingham Village Hall, EDF representatives did not explain their reasoning very clearly to the many local residents present. I am aware that EDF have produced an extensive report explaining their reasoning. Apparently, there are also other reports from independent bodies indicating that they do not agree with EDF's findings. All the Parishes, where salt marshes have been proposed, have opposed the scheme in a joint statement and asked EDF to reconsider. I have been in contact with Simon Opher our MP, as has Arlingham Parish Council. It is a matter for the Secretary of State to decide. Let us hope that either EDF are asked to instal the AFD at Hinkley Point C or Arlingham is not chosen as a site. Arlingham is a special tranquil backwater which will not remain peaceful with hundreds of visitors driving to and from a new salt marsh!

Closer to home, as I live in Nupend, there is a proposal to build 135 houses in Nupend. The developers have asked for an environmental Assessment Report. The development would, of necessity, be accessed down the narrow lane leading from Grove Lane to Nupend which one would have thought would be a good enough planning reason for refusing consent anyway! We will see how things progress!

I mentioned the importance of the Draft Local Plan in my last report. I would confirm SDC are obliged to report back to the Government Inspectors by 9th December on the concerns raised by the Inspectors relating to improvements to Junctions 12 and 14 of the M5 (amongst other things). On receiving this report, it is likely the Inspectors will decide whether to accept SDC's report in January 2025. If the report is accepted, the draft local plan will continue to be examined and probably be confirmed as the New Plan by December 2025. The New Plan will then govern what land can be developed for at least ten years. However, the Inspectors may not accept SDC's recommendations and reject the draft plan in January 2024, and SDC will have to start making a new plan immediately and ask developers to put forward sites they wish to include in that new plan.

On a final more cheerful note I have recently attended the "Heart of the Village" pop-in, and must say what a "buzzy" atmosphere there was in this well attended event. The next available pop-in is at the Village Hall on the 11th December 2024 from 2:00pm to 4:00pm You're sure of a warm welcome, tea and cake from the enthusiastic smiling local ladies!

Please do not hesitate to contact me if you have any issues or concerns that I may be able to help you with.

Stroud District Council: customer.services@stroud.gov.uk
Cllr Richard Maisey: cllr.richard.maisey@stroud.gov.uk



Ukraine Christmas Appeal 2024



Eastington's Grand Christmas Wrap took place on Saturday 2nd November at St Michael and All Angels Church and what an amazing turnout! Coffee and cake were served while we wrapped Christmas gifts for the children in Ukraine. We also packed items for new mothers and their babies who are in hospitals and maternity homes and other essential supplies that are hard to come by.

After nearly two hours of wrapping on an "industrial scale" we filled **27 boxes** and were able to donate £265 towards the transport costs. Fantastic and very humbling.

The boxes were collected by the *Polish Association and Ukranian Church* in Gloucester who will transport the goods overland to the areas in Ukraine with the greatest need.

Thank you to everyone who has contributed in any way to this very worthwhile cause.

We collect donations for Ukraine all year round. If you would like to contribute, donations can be taken to the Church, Eastington Farm Shop or collected by contacting Trish on 07724 551711.

Trish Pyne

THANK YOU



COMMUNITY BOOKSWAP

Thank you to Tom Lowe for taking out and replacing the shelving, thank you to the electrician for putting in the new light fitting, thank you to Eastington Parish Council for funding the repairs, and finally, thank you Sue and Caroline for cleaning, storing the books and making the phonebox look lovely again.

Rotary
Club of Stroud



STROUD ROTARY COMMUNITY AWARDS

A programme to support organisations within the Stroud area with a grant of up to £500.

If a small grant would make a real difference to your community project, apply for a Stroud Rotary Community Award. Nothing is too small to be considered.

For more details go to : www.stroudrotary.org.uk
or email :

community.awards.stroud.rotary@gmail.com

Closing Date for Applications is 6:00 p.m. 31st January 2025



Hopelands Preparatory School

38/40 Regent Street, Stonehouse, Gloucestershire, GL10 2AD

"We are a small prep school in Stonehouse with approx. 80 pupils who come from the nearby villages. Our Caretaker is looking to retire at the end of this year and we are looking for his replacement. This role would suit someone who has a passion for repairs and maintenance and ideally would be for someone who has time on their hands, and that they would enjoy becoming part of the Hopelands community. Although there are no set hours, I would suggest its about 15-30 hours per month."

To apply, please ask for the application form and complete this with a covering letter to the School Business Manager, Sam Compton: scompton@hopelands.org.uk.

Job Opportunity: Part-time Caretaker at Hopelands Prep School & Nursery

Location: Stonehouse, Gloucestershire

Start Date: November 2024

Position: Part-time Caretaker

Contract: Zero-hour contract, the hours will vary depending on the operational requirements of the school, during term time (35 weeks of the year), weekend caretaker checks are required.

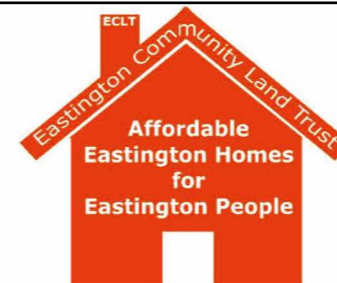
Birth Announcement



Olivia
Wright

"We welcomed the arrival of our daughter, on Friday 6th September at home in Nupend. The village of Nupend has been an amazing support to our little family, alongside the incredible midwifery team at Stroud Maternity Unit. We were wondering if anyone else had been born at home in the parish? If so, how many years ago, and where?"

Email your stories to articles@eastington.website to feature in the next issue. Thank you Rosie for sharing how magical home birth can be.



Eastington Community Land Trust (ECLT)

STOP PRESS: Homeground secured for homes to be built for local people

ECLT is pleased to report that it has now taken ownership of the Homeground site and Eastington can look forward to another development of affordable homes to be delivered by Spring 2026.

There will be 21 homes for Social Rent and 10 homes for Affordable Shared Ownership. All homes will be subject to the same Local Connection rules that applied in Fullers Close five years ago, when all 23 homes for Affordable Rent were tenanted by folks with a strong local connection to the parish.

There will be 1, 2 and 3 bed homes, as derived from the Housing Need Survey of 2019, in other words, what Eastington people said they needed most.

The 2019 Survey also highlighted a strong interest in Shared Ownership, a means by which people can part-purchase/part-rent homes, allowing for increasing percentages of purchase as these homeowners feel able.

ECLT and our partners Two Rivers Housing will be holding more Drop-ins at the Village Hall in the New Year to share knowledge on both the rented and shared ownership options.

Meanwhile, watch out for the contractors moving in, possibly before this edition of ECN comes to you!

Photos of activity and news of Drop-ins will be available in the February 2025 edition of ECN. You can keep up with developments at: <https://eclt.eastington.website/>

CRAFT FAIR 2024



First of all I would like to say a huge thank you to all of the people for showing their support and attending our Craft Fair. It was so lovely to see so many people and to catch up with those not seen for a while. The ladies were all selling their own hand made items which were just amazing, the amount of creative talent in the village is unbelievable; well done ladies. The raffle was a huge success - thank you Jo Pegler for putting it all together.

We are such a lovely group and meet every Friday morning at 9.30am tea and coffee provided. Again, thank you all so very much and hope to see you all again next year.

Linda Seeley



Eastington now has a Community Speedwatch group. In our rural area, where the risk of fatal accidents is substantially higher than in urban areas, dangerous driving has long been a serious concern for local residents. Thanks to the support of Gloucestershire Constabulary, a dedicated group of volunteers have come together with one clear mission: to raise awareness of the dangers of speeding and make our roads safer for everyone.

The group is united in the belief that all road users - drivers, passengers, pedestrians, cyclists, and animals - have the right to get around safely. To make this a reality, volunteers have been carrying out monitoring sessions once a week, at varying times and locations. This unpredictable approach helps to break habitual speeding and sets a precedent for local drivers and commuters.

The group is pleased to learn that a non-automated speed camera will finally be installed on Bath Road later this month. This new addition will provide valuable data that can be compared with prior speeds in and around the village. While speed cameras are effective in detecting speeding offences, the Eastington Community Speedwatch group recognises the 'halo effect' - the tendency for drivers to slow down only when they see a camera. For this reason, the group have decided to continue to monitor and report speeding in other high-risk areas, and have requested for the parish council to fund for a community speedgun (as the one in use is on loan!).

Would you like to help? Please email: eventscommittee@eastington.website to express your interest.



Eastington Wombles



Cast your mind back to 1973 (if you can). There was a song called *The Wombling Song*, released by - you know it - The Wombles, to accompany their television show, and the lyrics went a bit like this:

*People don't notice us, they never see
Under their noses a Womble may be
Womble by night and we Womble by day
Looking for litter to trundle away*

For those who are reading on in mild confusion, *The Wombles* are characters from a series of children's novels originating in 1968 that were adapted for television and music. These furry creatures live in burrows and love to help the environment by collecting and recycling rubbish in creative ways. The environmentally-friendly message took hold during the 1970s to become a widespread shift in human behaviour. Fast



forward several decades and *Keep Britain Tidy* decided to utilise The Wombles and their motto; "Make Good Use of Bad Rubbish" for their campaign to eliminate litter.

The Eastington Wombles litter-picking group was founded in February 2021 by Tina Davies, a care worker at the time looking for a way to get some fresh air and make a positive difference in the community. Tina's motivation was simple but powerful: "to clean

up and keep clean the Eastington Parish". What started as a solo effort quickly grew into something much bigger. The first Wombles litter pick took place on 7th March 2021, and it didn't take long for more and more residents to join in. As the group expanded, it became clear that certain areas of the village, such as Spring Hill and the school playing field were in urgent need of attention. These spots became regular targets for the Wombles' cleanup sessions.

One of the group's favourite meeting spots used to be the Big Green Coffee Machine at the OHMG/Snakey Park. After each session,



volunteers would gather there for a well-deserved coffee break. The group has also been known to report overflowing bins and instances of fly-tipping to the local council, ensuring that the whole village is kept clean and safe.

This article would like to commemorate the dedication of the first volunteers, as without these individuals, Eastington Wombles might not exist anymore, so - *thank you*.

If you've participated in a previous session and still have a litter picker or hi-vis vest no longer in use, the group would love to see these returned so that others can use them.

For more details, and to keep up with future sessions, you can find the group on Facebook: Eastington Wombles (<https://www.facebook.com/groups/873620303371384/>). Every helping hand makes a difference, and we welcome any new volunteers who want to join in and help keep Eastington clean - you don't need to be pointy-nosed or furry to qualify! Let's keep up the good work, Eastington - together, we can make our village a cleaner, safer and greener place for everyone.

The Rights of Man and Fish

BY PAUL HALAS

Some readers here may remember my series of articles on the River Frome and the Stroudwater Canal, which were a consequence of my love of nature, walking and fishing.

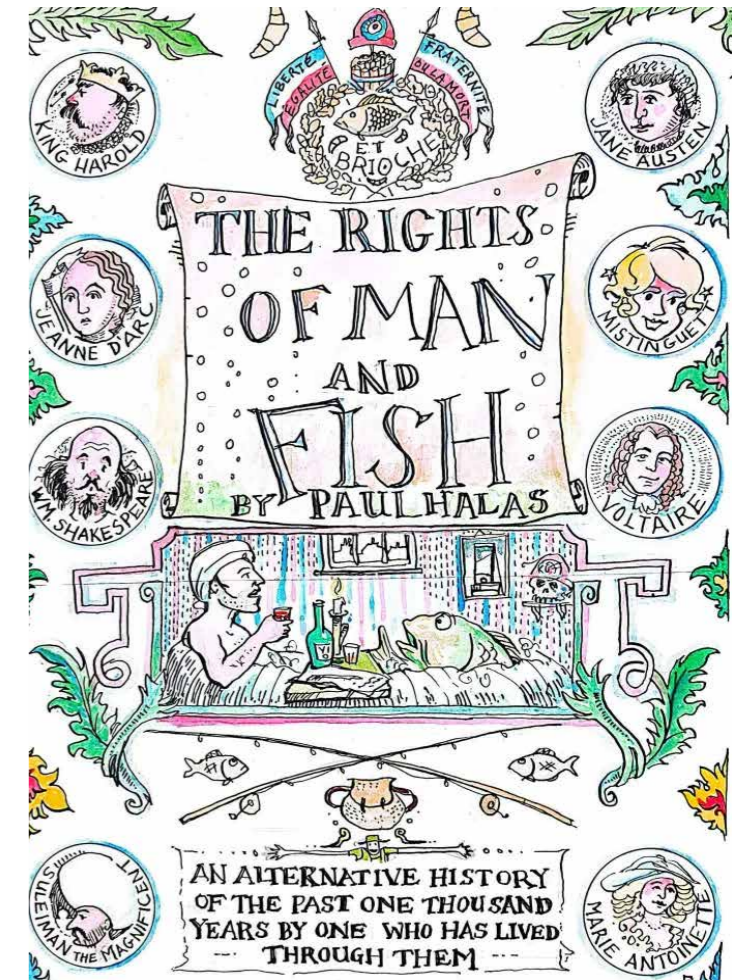
It was a pleasure to write them, and, after forty years of commercial writing, all my output is for pleasure nowadays.

I've lived in the Stroud area for fifteen years, and Eastington for the past three, and it's here that I wrote my debut novel, *The Rights of Man and Fish*, which was published in September this year. The book is hard to classify. Historical fiction? Fictional history might be nearer the mark.

The Rights of Man and Fish, wittily illustrated by Pete Field, romps through more than 1,000 years of European history, as seen through the eyes of a carp. An intelligent, acerbic, multi-lingual carp with a taste for Armagnac, patisserie and progressive politics. Gisella the carp is a one off, and any resemblance to any other talking fish, either real or imagined, is not only incidental but utterly impossible.

On her journey she meets such historical figures as William the Conqueror, Jane Austen, Alexander Pope and Pablo Picasso, as well as finding herself caught up in Da Vinci's experiments, various European wars, rows and love-affairs, not to mention a variety of alcohol-induced mishaps. Not only does she witness many of the great - and infamous - events of history, she is frequently the cause of them. Which is quite a feat for a fish with a brain the size of a walnut. She also overcomes the ongoing problem of how to talk to humans while remaining partially submerged, and avoiding barbs and hooks, both from anglers and philosophers.

The book is informative - there is real history



in it, as well as many absurd flights of fancy - but also entertaining and humorous. Apparently, it "*nods towards Gunter Grass, Thomas Paine and Paul Torday's Salmon Fishing in the Yemen, while maintaining a humour and breadth of vision entirely its own*". Maybe. But it also contains cameos by King Harold, Geoffrey Chaucer, William Shakespeare, Marie-Antoinette, Alan Turing, and a host of others... plus many of history's unsung heroes and villains, most of whom are made up.

Join Gisella as she finds out what makes the ideal society, based on what she learns from a millennium of human error, intrigue and haute cuisine.

.....
The Rights of Man and Fish is published by AN Editions: **aneditons.com**

The Night Before Christmas

WRITTEN BY SIMON CHAPMAN

We pull into the familiar layby on the A419.

The one between the M5 and the Great Oldbury roundabout. We haven't been down this way for a year and things have changed. For a start, the stadium build is underway on the other side of the road.

"Will they change the name of the club, boss?" I ask. "Like they do in America when a billionaire buys a team and moves them to his hometown? Come on, Eastington Rovers!"

"I've no idea what you're talking about, Bernard." The boss replies. "But you need to focus. We've got a lot of deliveries to make and only a few hours to make them. We need a 100% success rate tonight – or your job is on the line."

I bite my lip and say nothing. If I remember, the boss made the mistake last time. And it was me who rescued him. If I hadn't spotted him locked in that porch up at Claypits by mistake he would still be there now. And that wasn't the first time I'd rescued him from a tight situation. Too many mince pies. That was his problem. And sometimes too much brandy.

It's getting late and I'm feeling a bit peckish myself. The burger van has already left for the night. A pity; I've been counting on that. The boss, being a bit classier than me, has his eye on the *Little Waitrose* up the road. "What a great idea!" he says. "Now the big houses on Springhill won't have to go so far for their shopping."

"Right, Bernard. Grab your scanner, jump into the back and start scanning the parcels."

We must get cracking now. The boss takes out his iPad. As usual, he has all the delivery names and addresses laid out on a large and tidy spreadsheet. In the old days, we had an old exercise book and a well-chewed pencil. We had some almighty mess-ups back in the not-so-good-at-all days, I can tell you. That's why the boss's boss – his wife, Carol – installed a shiny electronic system. It updates deliveries every day, based on customer reports. So, we adjust them at the last minute. Depending.

The boss checks the list as I scan the parcels. Then, to be sure, he checks it again.

"Right! We're ready for Eastington! A quick stop at Waitrose for coffee. And a mince pie, Bernard. And then, we're off!"

Up and down Springhill, keeping an eye out for stray dogs. Around Churchend, up Millend. I grab some bags of manure from the stables for my garden and return the empty bags from last year. All around Victoria Drive – and the roads behind it I can never remember the names of. Down Alkerton Road. Past Number 5 where the boss stops to buy some bits and bobs from the stall (as usual, he asks if I have £1 to pay). Past the Co-op. Oops, the postie's parked on the *Keep Clear* sign again. Naughty.

"Oh look! *The King's Head* has changed! That was a great place to stop for a pint years ago." Boss says.

"Your memory's going, boss," I said. "It was always a bit rubbish. *The Lazy Goose* is much better."

We turn right at the roundabout. Dale's done a great job with the winter flower display there. We pass Broomhall's. Half of

Eastington are still queuing for their holiday orders at the last minute. On past the Grange and Cozens' farm, over the motorway and a hard right into Fullers Close. We're going at a fair old gallop now. The load is a lot lighter, but there's still lots to do. Up to Claypits, then a sharp U-turn at the lights. It's full speed all the way back down to the crossroads, then left into Swallowcroft.

"Oh dear, oh dear," cries the boss, "where's 36? And 56? And 58? And 60?"

"They're in the new bit!" I shout. The same as I do every year since they built 'the new bit'.

"Oh yes, silly me."

Then it's back to the Bath Road all the way down and bear left down Middle Street. Dodging the dog walkers in the dark. "I do wish they'd wear high viz," says the boss. The same as every year. The dogs or the walkers? "Both."

Once we get to 63 Bath Road, we're done. Time to pop into the Eastington Farm Shop for a last-minute Christmas tree. And a well-earned glass of mulled wine. For me. The boss is driving this year, much to his annoyance.

I realise to my shock that there's one more parcel left in the back. "It's too late," says the boss; we'll have to take it back with us. I pick it up and look at the label, but it's torn and I don't recognise the name and address. They could be newcomers to the village. ("Like anyone who moved in after about 1900," says the boss).

We're both disappointed. 'No parcel left behind,' that's our motto. And now one person in Eastington won't have their delivery.

The boss shouts, "I've got it! ONLY ONE PERSON CAN HELP US NOW! Only one person will know who the parcel is for!"

Of course! "Liz at the post office!"

We set course for the co-op. Everyone will receive their delivery; we will save Christmas. We can move on to the rest of the world.

I buckle up my seatbelt and the boss grabs the reins. "Now Dasher! Now Dancer! Now Prancer and Vixen. On Comet! On Cupid! On Donner and Blitzen!" To the post office!

The reindeer leap forward and we're off into the cold, night sky.

"Happy Christmas, Eastington!"

THANK YOU TO LOCAL WRITER (AND POSTIE), SIMON CHAPMAN, FOR SUBMITTING THIS SHORT PIECE OF FICTION FOR CHRISTMAS, 2024.

Frampton Village Society

BY JOHN NEWTON

A warm welcome is extended to everyone to come to our series of illustrated talks held in Frampton on Severn which we hope will be of interest to a variety of people; the talks cover both local topics of interest, more general subjects and sometimes a musical or other theme-based show.

Ripping Yarns and Wizard Wheezes

September 27th saw John Reid deliver his talk entitled '*Ripping Yarns and Wizard Wheezes*' which described the introduction and evolution of paper comics from around the First World War to their eventual demise in the late 80's and early 90's. The number of comics published over the years was quite amazing with many original paper copies being circulated around the audience on the evening. Many of the titles were fondly remembered by audience members with *Hotspur*, *Beano*, *Dandy* being some of the best well known together with their 'inhabitants' like *Desperate Dan*, *Minnie the Minx* and *Dennis the Menace* with his dog Gnasher. These comics were encouraged as an inexpensive introduction to the world of reading although the 'posher' comics like *The Eagle*, which was printed on quality shiny paper, were more expensive and took you into a world of adventure and science fiction which could be a bit daunting to the more nervous youngsters. Inevitably, following on so closely from the war years many characters in boys' comics were 'combat superheroes' and were joined by sports heroes, whereas the Girls' comics revolved more around horses and romance. There was also a strong play on the 'class' system with both Lord Snooty and Billy Bunter's experiences at his public school.

As part of the talk a comparison was drawn with the limited number of publications around today together with their staggering cost which originally started at around 1d

and now selling for anything up to £5! It was concluded that, with the evolution of television and the introduction of 'online' devices, paper comics may soon become just a memory. Some of the characters like *Dennis the Menace* can now be viewed in video form but, somehow, they just don't have the same appeal as your favourite paper comic which you waited eagerly for each week to pick up on a favourite story line or simply for a light-hearted laugh.

AGM and Bill Wood Memorial Shield Celebration

Following our AGM we were, once again, pleased to host the presentation of the Bill Wood Memorial Shield and celebration. This year's deserving recipient was Shirley Hunter, one of our own members. The award was made in recognition of all the activities that she has quietly supported in the village over many years. Having been born in the village and lived in here for most of her life Shirley is a well-known Framptonite and, hence attracted a large number of villagers as well as friends and family who all shared in her celebration.

You do not need to be a member of the Society to attend but should you be interested, please contact Kelvin Broad on **01452 740775** or **kelvinsbroad@outlook.com**.

2024 -2025 Village Society talks for your diary:
 22nd Nov - Sailing for a Living
 7th Dec - Christmas Supper
 24th Jan - The Snow Widows
 28th Feb - Butterflies, Dragonflies and Moths of Glos
 28th Mar - Musical Satire of the 20th Century
 25th April - The Work of a Master Stonemason
 16th May - Women's Land Army of WWII
 27th Jun - A Different View of our World
 26th Sep - A Safari Trip to Southern Africa
 24th Oct - A.G.M. and Bill Wood Presentation
 28th Nov - Super Bomb – Prof Gareth Williams
 6th Dec - Christmas Event



Eastington Church Roof Appeal

BY GILL GLOVER

Fundraising for the new church roof is going well. We've held some very successful events and received some generous donations. A special mention should go to the fabulous staff at our local Coop who have so far raised a whopping £417.51 from their cake stall and the collecting tin. Many thanks to them and all of you who have contributed. Fab!

Because we have bats in the church, we will need a Bat License before any work can commence on the roof. Our Bat Surveyor, Colin Menendez from CTM Wildlife Ltd, has been surveying the church and its surrounds over the summer and has identified two species of bats in the building; the Brown long-eared bat and the Lesser horseshoe bat. Outside more bat species were heard and seen. Sometimes it's difficult to identify them but possibly these included the Noctule, Soprano Pipistrelle, Common Pipistrelle, a Natterer's and a Serotine. This means that Churchend is a very special place for biodiversity. Lucky us!

On Saturday 26th October we held our first *Get Batty* event at the church. Lots of families came along to take part in bat related crafts, help to make some bat boxes



and identify bats on the 'find the bat' trail. We all learnt some fascinating bat-tastic



expert. Other superheroes on the day were Moya Potts for her hard work and creativity, coming up with super crafty idea's, Tim Potts for his great wood working skills on the bat boxes, Lucinda on facepaints and Jacky on refreshments... what a team!

We do have two bat boxes left which we are happy to sell (to the highest bidder) so if you are interested do get in touch. These are expertly made and will last a lifetime. If you want to make your own bat box, the instruction sheet has been posted on the ECRA FB page.

Our next event is a Candlelight Christmas Sing-along starting at 7:00pm on Saturday 14th December. Santa and his sleigh will be waiting outside the church to greet you so get in the mood for Christmas singing festive songs and listening to musical entertainment. There will be mulled wine and mince pies in the interval. No tickets required, just come along.

Whether you make it to the sing-along or not, do have a very Merry Christmas and thank you for all your support during 2024. 2025 here we come!

Follow ECRA on facebook:

Eastington Church Roof Appeal – ECRA
 Project Leader, Mike Naylor: **01453 828682**
 Fundraiser, Gill Glover **01453 828782**



Church of Christ the King

BY BARBARA LANG

A Letter from the Church of Christ the King Eastington

Here at the Church we have been studying the letters of Apostle Paul to the people of his time recently and, seeing how effective his communication was and still is, we thought we would write a letter to all those who live in Eastington and the surrounding areas.

Dear Friends,

We write this letter to let you know that we very often pray for you, several times a week. Although we do not know your name to use in our prayers we know that some of you are experiencing loneliness, or financial hardship. We know that for some of you this winter already looks bleak and long and you wonder how you will find the stamina to endure it. We are aware of people who have recently lost loved ones and are battling to create a new life that feels like living.

We believe that there are also people who have cause to rejoice this year, perhaps a wedding or a new addition to the family. Day by day, week by week, life's circumstances change and our feelings and attitude to life changes too.

We would love to meet you, to chat and to make you a coffee or tea. We welcome those with a Christian faith, those who know nothing about Jesus Christ, those with questions and those who just need to see a friendly face to come and share with us on Sundays at 11am (opposite the butchers in Eastington).



In our Bibles we read "There is a time for everything, and a season for every activity under the heavens:... a time to weep and a time to laugh, a time to mourn and a time to dance" Ecclesiastes, Ch3.

We hope that one day we may be able to share your walk through life and maybe even to laugh or dance together. Have a blessed Christmas and an Inspirational New Year. We will be praying for you.

Much love from the Church Community at the Church of Christ the King Eastington.

For more information about events or general information about the Church, please contact Beck:

01453 827414 or **075111 97265**
rebecca.burgin@pikelock.com

Or Barbara:

07570 401365
minister@coctke.org.uk

We are both happy to meet up with you or take you for a coffee and have a chat about life and the big questions that you may be wrestling with.



Church Services

We have our normal services on the 1st, 2nd and 4th Sunday in both December and January with a "Light Touch" service on the 2nd Sunday in each case. Christmas services will include the ever-popular candlelit Christingle Service at the usual time of 6pm on Christmas Eve followed by a Holy Communion Service at 10pm.

Our Remembrance Sunday Service took place on 10th November, as usual at the earlier time of 10:45am, and was particularly well attended. Two minutes silence was observed following the reading of the names of those from Eastington who lost their lives in the First and Second World Wars. The Last Post was sounded and the silence ended with the Reveille. A very moving account of four Eastington lads as they excitedly prepared for their journey to serve in the Great War and which appeared in the Eastington Community News, was read. All were killed in action.

The Festival of Nine Lessons and Carols will not now take place and instead we are having a Candlelight Christmas Sing Along Concert in aid of the Church Roof Appeal on Saturday 14th at 7:00pm. Santa on his sleigh will be there to greet you on arrival and there will be refreshments. See pg5 in this edition of the ECN for further details.

Stroud Food Bank Collection Point

We had a bumper crop of donations following the Church and School's Harvest Celebrations. Despite this the Food Bank

St. Michael and All Angels Church

BY MIKE NAYLOR

report that they cannot meet demand from donated items and are currently having to buy in approximately 50% of the food they distribute. So, the message is keep on giving!

Ukraine Appeal

The Christmas collection for Ukraine has now become an annual event in the Church and this year the "Big Wrap" took place on 2nd November where a large number of volunteers gathered in the church to help. Selection boxes for children in Ukraine were particularly requested and a total of 27 boxes were soon packed with supplies of nappies, toiletries, food, sweets, chocolates and gifts for onward transmission in time for Christmas and to provide some comfort and relief for those whose daily lives are led in fear. Money was also generously donated to help offset transportation costs.

We continue with our regular collection for Ukraine and a list of requisites is on display at the back of the Church.

Library

The library continues to be a very popular asset to the church and is well used. New titles of up-to-date novels are always welcome if you have any you would like to donate.

Rev Liz Palin:

tv1stroudwater@gmail.com

Rev Dave Bishop:

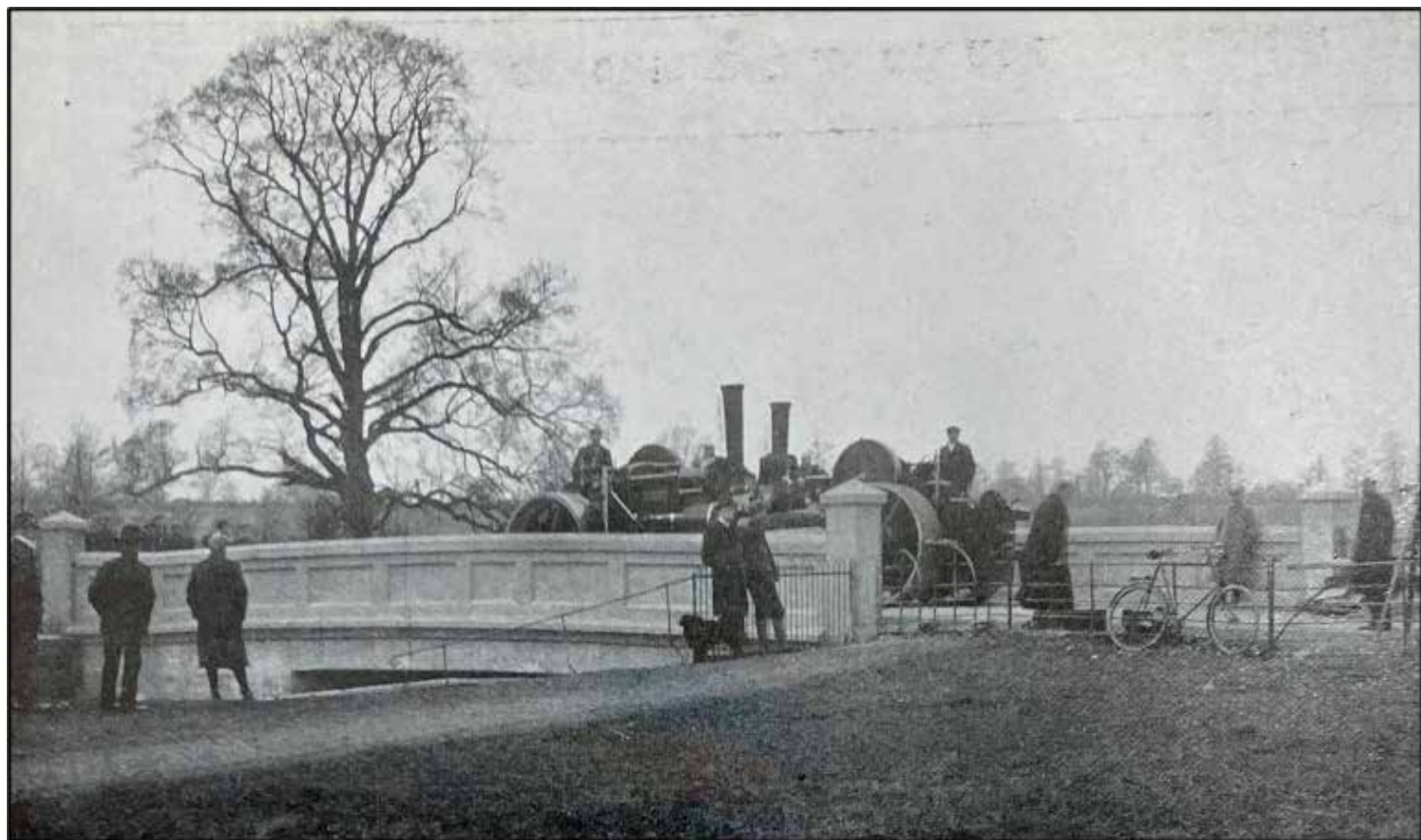
tv2stroudwater@gmail.com

Churchwarden Mike Naylor:

mike@mikenaylorsurveyors.co.uk

Meadow and Churchend Bridges

BY STEPHEN MILLS



As we all know, there are various streams and rivers running through the village, and of course, this means that some method of getting across them has always been needed.

A few generations ago, the only option for some villagers would have been to get their feet wet, crossing via one of several fords, although bigger streams and the branches of the River Frome were eventually provided with bridges to ease the passage of carts and later, motor vehicles. Many such early bridges were built mainly of wood,

and these had a limited lifespan before needing replacement with something more substantial. Which brings us to the subject of this article – Meadow and Churchend bridges at the foot of Spring Hill.

In 1908, Gloucestershire County Council built two replacement bridges using what at the time was called new ferro-concrete. Although concrete had been in use for centuries, concrete structures could now be strengthened by the inclusion of reinforcement often in the form of iron or steel bars, usually embedded in the concrete before it set – today, this is usually referred to as ‘rebar’ and is used widely in all manner of construction projects. Our two new bridges were constructed on the “Hennebique System” under the

supervision of Mr E S Sinnott, the county surveyor at the time. The system was named after a French engineer, the first developer to use iron then steel beams encased in concrete to add strength to buildings and other structures. It was soon used for building reinforced concrete bridges such as our two, although it was not until the first decade of the 20th century that its use began to spread. The first bridge project in the UK was in Hampshire in 1902, and its success led to many others over roads, rivers, and railways. So, our new village bridges were early examples of the technique. By the 1930s there were about 2000 reinforced concrete bridges in the UK. Another rather larger local example was Westgate Bridge in Gloucester, also built on the “Hennebique System”

Naturally, especially as this was a fairly new form of bridge construction, the Council was anxious to make sure that the Eastington bridges had been properly built and were up to the job, so a series of load tests were carried out. This was reported in the *Cheltenham Chronicle and Gloucestershire Advertiser* of March 1908, which is where this fascinating photo came from. The article mentions that the foundations, abutments, deck, and parapets were all of ferro-concrete, and that the cost compared very favourably with masonry and steel girder decking. And, the ferro-concrete had the additional advantage of not requiring painting or maintenance.

Both the Meadow and Churchend bridges were tested with the specified load of two steam rollers (visible in the photo) of about 35 tons standing side by side. The rollers were both built by Aveling and Porter and were probably from Gloucestershire County Council’s fleet. The tests were carried out

under the watchful eyes of the county surveyor, accompanied by Mr R A Lister, county councillor; Mr E J Cullis, representing the patentees; Messrs Ratcliff and Hall, district surveyors; Mr Howells, the Clerk of Works; and Messrs T B Cooper and Co of Bristol, the contractors. The latter were well-known for their bridge projects that included one over the River Avon near Evesham in 1908 for The Great Western Railway Company.

Meadow bridge had a span of 28 ft, and with both steam rollers in place, had a maximum deflection on the centre of the bridge of only “three thirty seconds of an inch”, the road deck returning to its original level once the load was removed. With the same load, Churchend bridge, with a span of 12 ft, didn’t budge at all! At first glance, the present Meadow bridge looks largely unchanged, but on closer inspection, there are subtle differences, so must have been replaced at some point. Does anyone know when?

The superb photo was uncovered by Mike Dodd from the *Restoration and Archiving Trust*, based at Toddington on the Gloucestershire and Warwickshire Railway, and kindly passed on by Mike Smith of *Stroud Vintage Transport & Engine Club*.

STEPHEN MILLS HAS LIVED IN EASTINGTON FOR THE PAST 53 YEARS, AND ALMOST SINCE ARRIVING, HE’S BEEN RESEARCHING AND RECORDING THE VILLAGE’S LONG AND INTERESTING HISTORY. STEPHEN’S REAL INTEREST IS IN THE AREA’S RICH INDUSTRIAL PAST; HIS PHD FOCUSED ON THE WOOLLEN CLOTH MILLS OF THE STROUD VALLEYS. HE WORKS FOR PART OF THE INTERNATIONAL ENERGY AGENCY AND HE’S ALSO THE CHAIRMAN OF THE GLOUCESTERSHIRE SOCIETY FOR INDUSTRIAL ARCHEOLOGY.

Down Memory Lane...

Thank you to Megan Timbrell for these scans.



Mrs Marling and Elsie Shill
1, Hillview Cress Green, 1913

Mr & Mrs Marling, Herbert Marling (reported missing during 1st World War), Elsie Shill, Middle St, Eastington



Sam and Lizzie



Harry Browne and his brother
Middle St, Eastington



Welcome to the Festive Season from all of us at Eastington Farm Shop! We hope you have been enjoying the great views and easy access provided by our completed entrance and coffee bar windows - not to mention the warmth from the fire!

Thanks to all of you for once again making our annual Pumpkin Picking a success; it was great to see wellies both large and small wandering down the path and returning laden with pumpkins of all shapes and sizes, whilst helping us raise an amazing £408.85 for the charity Parkinson's UK.

November saw the arrival of lots of new food goodies and gifts along with regular favourites, with many of you making a start on your Christmas purchases. We have a great selection of local and unique products including a range of festive decorations and local prints, as well as fabulous foodie treats and hand selected Christmas Hampers.



Locally grown Christmas trees are now available to purchase and can be found in the garden.

Our popular Christmas workshops are running with Norah Kennedy's Winter Willow and Karen Green - Winter Foliage pen and watercolour. There may still be spaces available - check out our website for details.



If you are looking for a door garland to brighten up the dark days, these are available to buy in the shop and to order, all made here on the farm by Sue.

Christmas ordering has gone on-line this year! It provides a clear and easy way for you to plan your Christmas comfortably at home; please remember we are also ready to help you with this and to answer any questions you may have on our products. Just call or email.

We look forward to welcoming and assisting you during this busy period, whilst also providing a warm retreat from the dark and cold. All of us at Eastington Farm Shop and Middlehall Farm would like to wish you and your families best wishes during this festive season and for the year ahead.

A happy and prosperous 2025!

Please note we are closed from 12pm on Christmas Eve and re-open on Thursday 9 January 2025

www.eastingtonfarmshop.co.uk
01453823655

Normal Opening Hours:

CLOSED MONDAYS

Tues-Sat: 9am-5pm

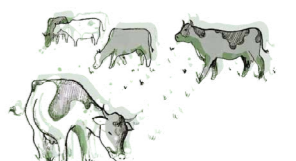
Sun 10am-1pm

Christmas Hours:

Sun 22/12: 9am-5pm

Mon 23/12: 9am-5pm

Tue 24/12: 9am-12pm





Winter Pruning Tips for Trees and Shrubs

December is a perfect time to prune certain trees and shrubs while they're dormant, as it encourages healthy growth and helps plants produce more flowers and fruit. Here's a quick guide on what to prune now:

Fruit Trees

- Apple and Pear Trees: Remove crossing branches and thin out crowded areas to promote better fruiting.
- Currants and Gooseberries: Trim to an open shape, removing weak or crowded branches.
- Plum and Cherry Trees: Avoid winter pruning to prevent disease; these should be pruned in early summer instead.

Roses

- Remove all dead, diseased & damaged stems. Remove all leaves and ensure you remove all material to prevent disease spreading.
- Roses planted in the last 12 months should only be very lightly pruned to protect the plant. For established roses cut stems back by around 1/3 to maintain its size. To reduce a rose size you can take stems back by 1/2.

Always keep pruning tools clean to prevent disease spreading. Apply oil to prevent rust and sharpen regularly to maintain clean cuts.

 www.jhgardendesign.co.uk

 jess@jhgardendesign.co.uk

 [jessica_holcombe_garden_design](https://www.instagram.com/jessica_holcombe_garden_design)

 Jessica Holcombe Garden Design



With December's arrival comes the excitement of holiday traditions, social gatherings, and seasonal treats. However, it's also when many feel the strain of busy schedules and stress. Prioritising your health and wellbeing this month can help you make the most of every moment.

Start by keeping your body moving. While schedules may be packed, even short, daily walks or stretching sessions can go a long way to keep muscles active and stress levels manageable. Remember that physical activity releases endorphins, the body's natural mood lifters, which can counteract holiday stress. Nourishment is key, but so is enjoyment. The holidays often bring indulgent meals, and it's okay to enjoy them mindfully. Balance rich foods with plenty of fruits, vegetables, and hydration. Drinking water and being conscious of portion sizes can make a big difference in maintaining energy levels.

Rest is another cornerstone of wellbeing that tends to be overlooked in the festive rush. Prioritise sleep and make time for quiet moments to recharge. Quality rest improves mood, strengthens the immune system, and enhances focus, helping you stay present during gatherings with loved ones.

Finally, the Spinavita team will be on hand throughout December to provide you with any extra support you need. We will be open on Monday 23rd and will reopen on Friday 27th December for those that need us. Give us a call on 01452 883232 to book your appointment.



Spinavita Chiropractic has been at the heart of Hardwicke and Quedgeley for over 12 years.

Our dynamic team of Chiropractors, Sports Therapists and Massage Therapists are experienced in getting you mobile, pain free and supporting your overall health and wellbeing.

We hope to welcome you in soon.

Book an appointment

01452 883232

www.spinavita.co.uk

62 Westbourne Drive, Hardwicke,
Gloucester, GL2 4RU

A message from Kelly

It's been over a year ago I was asked to set up a chair exercise class in the village. I'm so pleased I did. It's a great class which I really enjoy teaching. Not only have the ladies benefited from the class but I have benefited from them. We have a laugh and a chat so it's also a nice social meeting.

Everyone has done so well with the effort they put into it, and I love that they are always smiling.

We start with a few dance routines then move on to some toning to strengthen muscles, followed by stretching to help flexibility. During October a couple of the dance routines have been to Thriller and Time Warp, and at the end of November we will start our Christmas routines! So, a big thank you and well done to all the ladies who attend.

Kelly



DavidPrice
PLASTERING
07976 298 089



Over 15 years of plastering
experience

Professional, reliable and
friendly service

Call today for a FREE
quotation

TILING
D. R. TILING

CERAMIC, PORCELAIN, MARBLE,
NATURAL STONE
UNDERFLOOR HEATING

ALL ASPECTS OF WALL & FLOOR TILING
FREE ESTIMATES AND ADVICE

TEL: 07805 341464

TEL: 01453 827770

Email: Daverollings@uwclub.net



Sit Fit Class
Tuesdays at 2:00pm
Eastington Village Hall

Exercises done on chairs,
suitable for those needing a
more gentle type of exercise.

Just turn up or contact Kelly:
07548 129424
kellyhogg@talktalk.net



Stretch & Tone Class
Fridays at 1:00pm
Eastington Village Hall

Increase flexibility, strengthen
and tone muscles.
Just turn up and bring a mat.

Contact Kelly
07548 129424
kellyhogg@talktalk.net

RENEW
DECORATORS

Stroud based Painter & Decorator,
providing high-quality interior
and exterior decorating services
in Gloucestershire and the Five Valleys

STROUDDECORATOR.CO.UK

07986 521 792

G&R WATSON

Plumbing Services

The small job specialist

Toilets Showers
Radiators Taps Immersions
Leak detection Ball valves

Call Chris 07836 264583

chriswatsonplumber247@gmail.com



Best rates, reliable and responsive

LYNDON HARRIS

PLUMBING & HEATING ENGINEER

Installation of OIL and GAS boilers
Pressurised Cylinders
CENTRAL HEATING systems

BATHROOMS completely refurbished
Routine plumbing tasks

GAS SAFE registered, fully insured
20 YEARS trade experience

12 Victoria Drive, Eastington

01453 821559 / 07966 750137

lyndonharris@live.co.uk

SP ELECTRICAL

(Stroud) Ltd

- Domestic
- Commercial
- Agricultural
- Testing and Inspection
- EV Charging
- Renewables



01453 765557 office@sp-electrical.co.uk
www.spelectrical.com

South Gloss Decorating

Painters & Decorators

Interior and Exterior

Affordable, Reliable, Professional

Dave Beauchamp

07739 382 524



www.southgloss.co.uk

www.facebook.com/southgloss



Extensions * Renovations * Kitchens * Bathrooms

07866 600 961

Email: langleyconstruct@gmail.com

No obligation estimates and consultations

SMITHS



As good as our word, as strong as our name

YOUR TRUSTED LOCAL SUPPLIER

ASBESTOS REMOVAL
CONCRETE SUPPLY
DEMOLITION AND CONSTRUCTION
DRAINAGE
GRAB HIRE
MUCKAWAY
PLANT AND MACHINERY HIRE
SKIP HIRE
WASTE MANAGEMENT

CONTACT US TODAY 01453 822227

WWW.SMITHS-GLOUCESTER.CO.UK

TERRASCAPES

Landscaping and Groundwork

We undertake any type of domestic and commercial landscape construction and groundworks Including but not limited to:-

- Paving
- Decking
- Fencing
- Driveways
- Walls
- Turfing
- Foundations
- Floors
- Brickwork /Blockwork
- Drainage

Tel: 01453 759302

Mobile: 07866 515715

Website: www.terrascapes.co.uk

E-mail: info@terrascapes.co.uk

THE OLD COAL YARD, CHEAPSIDE, STROUD, GL5 3BN



The Home Remedy

PLEASE DONATE, FREE COLLECTIONS!

Contact us at stroud@thehomeremedy.org.uk to arrange a free collection

The Home Remedy Stroud, formally known as Stroud District Furniture Bank is a community interest company who collect unwanted furniture and recycle it back into the community through our shop and community referral program. We aim to build a truly circular economy by showing that no one need buy new furniture again. We are based in a renovated mill building in Brimscombe

Our referral program allows families to be referred to us to receive heavily subsidised furniture delivered to their door.

We offer employment through paid placements and flexible employment opportunities.

Since January 2024...

Recycled 88.14 tonnes of furniture

Delivered 257 items of free or subsidised referral furniture into 205 families

Come visit us at Brimscombe Mill, Brimscombe, GL5 2QN

N Bowen

Qualified Carpenter

Painting & Decorating

Kitchen Fitting

Building Maintenance

Any job considered

07928 552639



nigelbow@yahoo.co.uk



Alban Hefin

Garden maintenance services

www.albanhefin.com

info@albanhefin.com

07748 933622



Lowe's Picture Framing

Bespoke :: By Appointment

Established 1985

30% cheaper than the High Street

Framing of posters, oil paintings, watercolours, charcoals etc.
2-3 weeks turnaround.

Tel: 07973 449271

Email: mark@marklowe.biz

www.marklowe.biz

Nupend House
Nupend,
Stonehouse GL10 3SP

visit



Lowe's Picture Framing
For latest updates

Luxury Care Home Community

The Hollies Nursing Care Home
Holly Oak Dementia Care Home

The **Hollies**, renowned for its excellence in nursing, dementia and residential care provides the ultimate in state-of-the-art accommodation. Spacious, beautifully designed rooms, suites and living areas along with pretty gardens provide residents with a high quality of living. Exceptional dining caters for the most discerning preferences and needs.

At the Hollies, care is not just something we offer, it's at the core of who we are. We treat every resident as an individual and work hard to tailor our person-centred services and activities to support their every need.

Bessys
TEA ROOM

THE OLD
ENGLISH PUB

Kayes
HAIR & NAILS

Community living connecting families and friends
in a welcoming environment

Bessys Tea Room
for special treats
and parties

The Old English Pub
for social
gatherings

Kayes Hair & Nails
for beauty and
wellbeing

The Terrace for
events and outdoor
entertainment

Excellent Reviews
Limited spaces available

the gold standards
framework
carehome.co.uk

Call Jo or Sadie now:

01453 541400

info@thehollies.co.uk

We welcome immediate and planned admissions.
Discover more at thehollies.co.uk
Drake Lane, Dursley GL11 5HA

IP LEEPER PROSSER
SOLICITORS

OUR SERVICES

- Residential Conveyancing
(Sales, Purchases & Remortgages)
- Commercial Property
- Wills
- Probate
- Trusts and Inheritance Tax
- Powers of Attorney

Tel: 01453 791461

Web: www.leeperprosser.co.uk

E-mail: enquiries@leeperprosser.co.uk

40 High Street, Stonehouse, Gloucestershire, GL10 2NA

Opening Times: Monday to Friday - 9am to 5pm

Help for when it hurts

SEVERNSIDE OSTEOPATHY



Osteopathy - a natural, non-invasive way to
improve overall health and wellness...

- * Help for aches, pains and stiffness, from head to toe
- * Sports injuries
- * Women's health - before and after pregnancy
- * Your family's health in safe hands, from young to old
- * Off road parking and partial disability access available
- * Member of The Allied Health Professions

www.severnsideosteopathy.uk

Caroline Tosh
BO MSc FSCCO

01452 740818

admin@severnsideosteopathy.uk

Registered with the General Osteopathic Council



ALLEN-WHITE FUNERAL DIRECTORS



Independently owner funeral directors - spanning 75 years in the Gloucestershire area.
Pre-paid funeral plans, friendly professionally trained staff and funerals that are as individual as you are.

Telephone (24-hours): 01453 822 409 | www.allenwhitefuneraldirectors.co.uk

BATH ROAD GARAGE

Eastington

www.bathroadgarage.co.uk

01453 822907

the Good Garage Scheme 

MOT TESTING CENTRE

FOR PETROL OR DIESEL

SERVICING & REPAIRS

FOR ALL MAKES & MODELS

TYRES, BATTERIES & EXHAUSTS

LASER 4 WHEEL ALIGNMENT

FREE LOCAL COLLECTION

FREE LOCAL DELIVERY

BY APPOINTMENT



Fully mobile-approved workshop:
home, site or storage.

Caravan industry trained,
covering Gloucestershire and all
surrounding counties.



- Servicing and repairs
- Accessories supplied and fitted,
including movers & solar panels
- Swift approved workshop
- Approved for warranty work on
major manufacturer appliances.

vtbcaravans@googlemail.com
www.vtbcaravanservices.co.uk
07754539100 | 01453 299261

KB Coaches

VIP TRAVEL

PRIVATE HIRE

19 - 49 - 74 Seater Coaches

Hillview Garage,
Eastington, GL10 3AJ

01453 825774

kbcoaches@yahoo.co.uk

www.kbcoaches.co.uk



DIAL - A - CAB TAXIS



07851 - 507 - 207

01453 - 272 - 222

LOCAL AND LONG DISTANCE

FAST & FRIENDLY SERVICE

Martin Pollard



Your Local Accident Repair Centre

"No job too large or small!"

01452 740025

Insurance Approved

Courtesy Cars Supplied

Car & Light Commercial Repairs/Refinishing

Body Jigging Facility & Welding Technology

Computerised 4 Wheel Alignment System

Frampton-on-Severn Industrial Park, GL2 7HE | martinpollard@hotmail.com

WESTEND OFFICE SUITES



LOCAL QUALITY OFFICE SUITES

- Air Conditioning
- Kitchenette & WC Facilities
- Generous Car Parking
- Great Rural Location

Westend Office Suites, Grove Lane, Westend,
Nr Stonehouse, Glos GL10 3SL

Telephone: 07760207194

Email: enquiries@westendofficesuites.co.uk

www.westendofficesuites.co.uk

yes you can with Slimming World

A warm welcome awaits everyone at
Eastington Slimming World Group

*Every Wednesday at 5:30pm
at the Village Hall*

Contact Sue: 07590 667307

... to get that Slimming World Feeling!



Dry Trims
Cut & Blow Dries
Half or Full Head Foils
Hair Styling and Up-dos

01453 825081

BondandCo

Alkerton Road, Eastington

Lynne Jessett Floristry

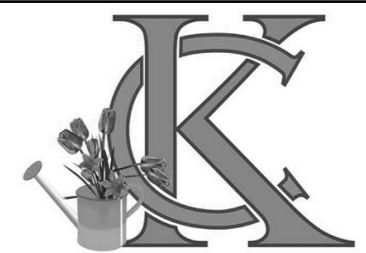
Flowers for all occasions:

Weddings
Funeral Tributes
Gift Bouquets
Workshops

01453 825136 | 07815 984857

info@lynnejessettfloristry.com

www.lynnejessettfloristry.com



KOPEND CREATIONS

FLOWERS FOR ALL OCCASIONS

Weddings - Funerals - Parties - Births
Anniversaries - Gift Bouquets
Flower Arranging Classes

Tue - Fri 9:30am - 5:00pm
Saturday 9:30am - 3:00pm

paul@kopendcreations.co.uk
01452 224473 | 07742 933331

www.kopendcreations.co.uk



- Gel manicure
- Footlogix Pedicures
- Waxing

Ultimate Beauty By Louise

- Dermaplaning
- Spraytan
- ... and lots more

Beauty, Cosmetic & Personal Care
Fully insured

07769 273893

Summerhouse Salon
3 Brownings Close, Eastington

J. BROOMHALL Ltd.

Established in Eastington 1898

Supplying
quality local meat
through four generations

We also offer a comprehensive
service to livestock producers.

01453 823122

www.jbroomhallltd.com

SUPPORTING THE RURAL ECONOMY



EASTINGTON FARM SHOP

MIDDLEHALL FARM

Fresh seasonal fruit and vegetables
Home-bred beef
Our own milk vending machine
Lots of other goodies

Delicious coffee and cake
All-weather seating and woodburner
Child-friendly outdoor space

OPENING TIMES

Tuesday - Saturday: 09:00 - 17:00
Sunday: 10:00 - 13:00

01453 823655
www.eastingtonfarmshop.co.uk

PIANO LESSONS

Piano lessons locally in Eastington, or online to anywhere in the world.

- All ages and abilities catered for
- Take exams or play for fun

I have taught piano and keyboards for several years - in Stroud and Aberdeen - and am now living in Eastington, and teaching both locally and online. Many of my pupils are currently taking exams.



Contact:

Elizabeth-Anne Ponting

079 1001 6565

ab.east.piano@gmail.com

BARK
SIDE
OF
THE
GROOM



Bark Side of the Groom is open at Krate Village, Whitminster! (Next door to the Whitminster Inn)

We offer a 1-1 grooming experience and provide bespoke grooms tailored to your dog. Plenty of free parking and later appointments available!

Get in touch to request some availability or for information on pricing.

07591135248

Aifa@barksideofthegroom.co.uk

www.barksideofthegroom.co.uk

Find us on Instagram & Facebook

Krazy k9s limited



Time to be best friends again.



Dog Training and Socialisation

- ✓ Puppy Socialisation & Delinquent Dogs
- ✓ Competitive Obedience
- ✓ Rescue Rehabilitation
- ✓ Fun & Competition Agility

1 to 1 tuition tailored to you and your dog's needs or class sessions

07748 183739

www.krazyk9ltd.co.uk

facebook: Krazy K9's Dog Training



COFFEE HOUSE WITH 7 ENSUITE BEDROOMS

OPEN 7 DAYS, 8AM-4PM



MUDDY BOOTS & DOGS WELCOME

ARTISAN COFFEE & TEAS

FRESH PASTRIES, CAKES,
SOURDOUGH TOASTIES & MORE!

TAKEAWAY / EAT-IN

PLENTY OF INDOOR & OUTDOOR SEATING

GROUP BOOKINGS WELCOME!



WWW.THELAZYGOOSE.CO.UK

EASTINGTON, GL10 3AA

DECEMBER

29th - 7th December
Christmas Tree Festival
@ St Laurence's Church, Stroud

1st December
Christmas Market
@ The Rest, King's Stanley

2nd December, 7:00pm
Every Monday
Words, Poetry and Music
@ Fromebridge Mill

5th December, 10:00am
Every Thursday
Coffee, Bingo & Chat
@ Eastington Village Hall

5th December, 7:00pm
ECLT Board Meeting
@ Eastington Village Hall

6th December, 9:30am
Every Friday
Craft and Chat
@ Eastington Village Hall

6th December, 5:30pm
Christmas Extravaganza
@ Great Oldbury Primary

6th December, 6:00pm
Goodwill Evening
@ Stroud Town Centre

11th December, 2:00pm
Heart of the Village Pop-In
@ Eastington Village Hall

12th December, 7:00pm
Parish Council Meeting
@ Eastington Village Hall

12th December, 7:30pm
Christmas Jumper Bingo
@ The Badger

14th December, 7:00pm
Candlelight Xmas Sing Along
@ St Michaels & All Angels Church

14th - 23rd December
Breakfast with Santa
@ Slimbridge Wetland Centre

16th - 30th December
Eastington Christmas Lights Trail & Competition
@ Village

20th December
Last Day of School Term
@ Eastington Primary School

29th December, 10:00am
Wombles Litter Pick
@ Village

29th December, 7:00pm
Big Family Christmas Quiz
@ The Badger

31st December, 8:00pm
NYE 80's Disco & Karaoke
Requires tickets (free event)
@ The Badger

JANUARY

1st January, 11:30am
NY Day Steam Up 2025
@ Fromebridge Mill

6th January
Inset Day
@ Eastington Primary School

7th January
School Term Resumes
@ Eastington Primary School

9th January, 7:00pm
Parish Council Meeting
@ Eastington Village Hall

11th January, 8:30pm
Live Music: Free Fall
@ The Badger

22nd January, 2:00pm
Heart of the Village Pop-In
@ Eastington Village Hall

26th January, 10:00am
Wombles Litter Pick
@ Village

31st January, 4:15pm
Six Nations Rugby
@ The Badger

For further details about these events, see online or email us. If you would like to add an event in the next issue, please email: articles@eastington.website.